

Luxury Residential complex

Quality living space

Breathtaking view

Unique beauty

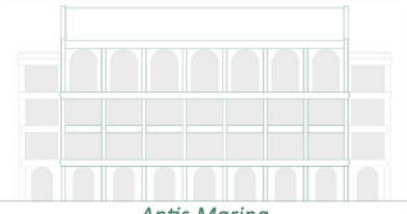
Clean lines, natural materials

*Enjoyable and comfortable
environment*

Antis Marina

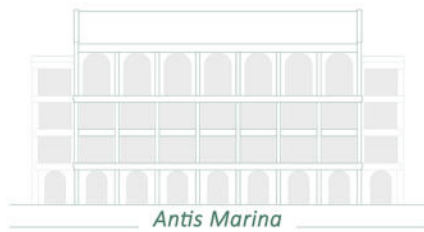
Meljine, Herceg Novi





Antis Marina





Antis Marina



Sense of belonging

„Antis Marina “ is an exclusive residential complex on the coast of the Adriatic sea in Herceg Novi in Montenegro.

Evaluating the traditional elements incorporated into the modern architectural expression, we got a visually appealing structure.

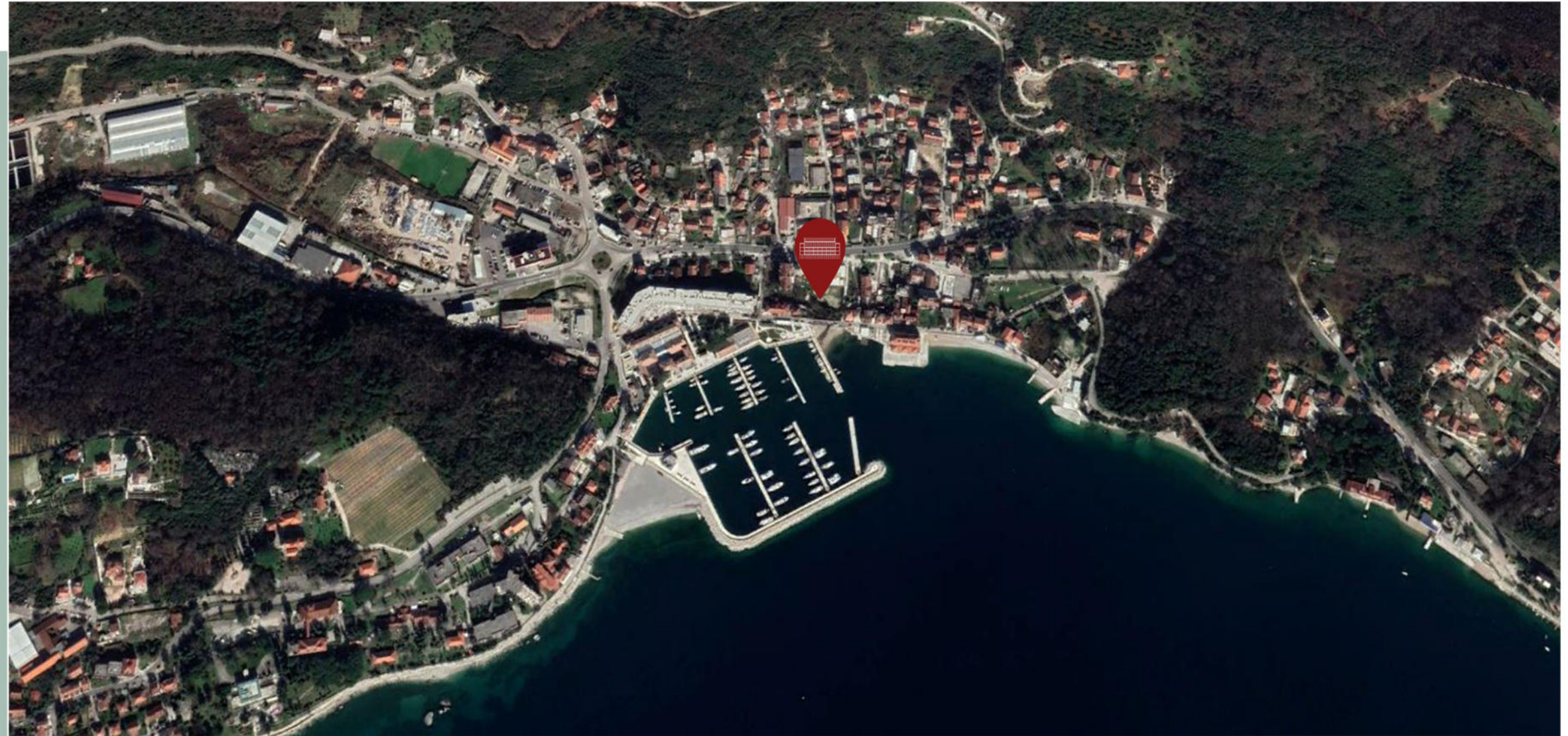
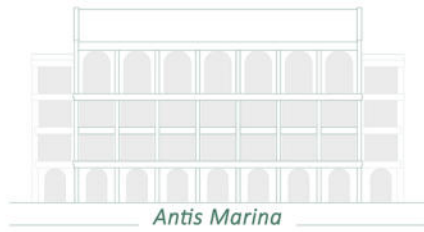
In addition to meeting the needs for housing, every detail is also designed to provide its future residents an enjoyable and comfortable non - residential enviroment.

All apartments have an amazing sea view enriched with a relaxing and harmonious ambience.

Quiet Bay of Boka Kotorska surrounded by mountains and sea represents atractive location for family life and also easy access to some of your favourite hobbies and relaxation.

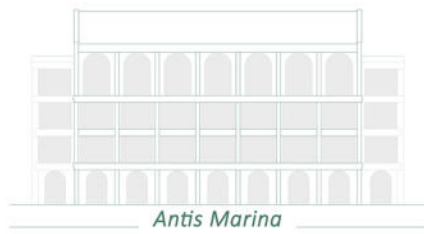
The architecture of the building is created not to stand out from the aesthetics and richenss of cultural heritage in Boka Bay.

The breathtaking views and unique beauties are what make this place so exceptional.



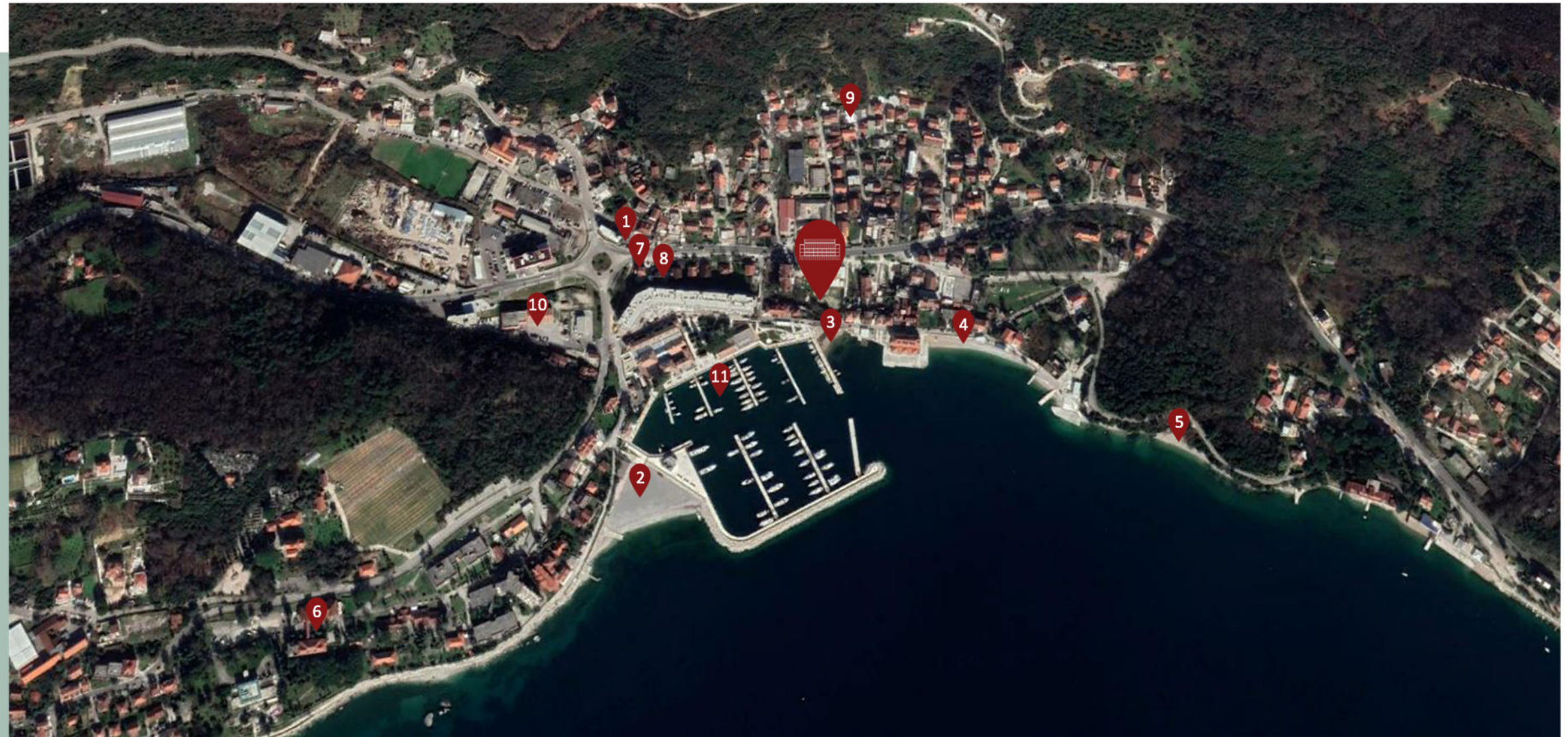
Perfectly placed

- Frontline of the sea
- Opposite of the marina
- Small private beach
- Near luxury complex Lazure Marina and SPA center
- All city infrastructure in walking distance
- The building is accessed from the road on the south side of the property.
- All the facilities needed for a comfortable life are located nearby and at very short distances.



Sport and recreation

- 1 Gym 350m
- 2 Beach 320m
- 3 Beach 30m
- 4 Beach 140m
- 5 Beach 400m



Medical assistant

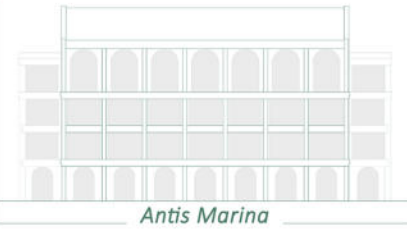
- 6 Hospital "Meljine" 860m
- 7 Pharmacy 350m
- 8 Medical Center 350m
- 9 Private Medical Institution 400m

Emergency service

- 10 Fire and Rescue Service 550m

Harbor

- 11 Small Harbor "Meljine" 100m



Antis Marina

Interior design

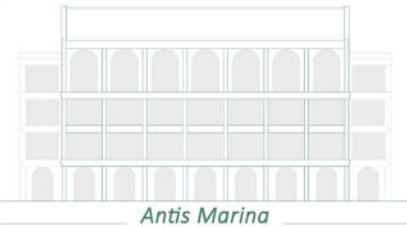
Interior space is designed to achieve a healthier and aesthetically pleasing environment for the residents. The intention was to create a quality living space.

Building consists of only 36 apartments - studios, 1 bed, 2 bed and 3 bed apartments. Apartments are organized on the ground floor, first, second, third floor. In the attic are designed beautiful high duplexes with luxurious arched windows with a stunning view.

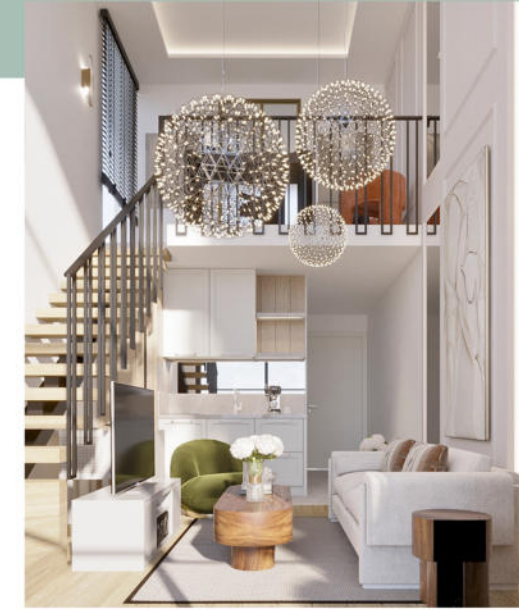
All apartments have a sea view and all ground floor apartments are with garden.

The basement is organized as space for garages and technical equipment of the building.





Antis Marina



Interior design

Clean lines, natural materials and a lot of natural light are just some of the many elements in this carefully designed space.

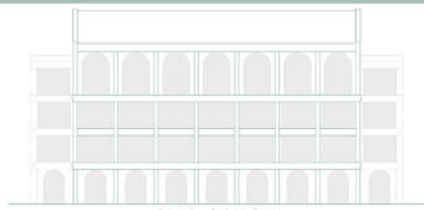
Apart from location, the functionality of this building is one of its most valuable advantages.

Free spaces that are formed in the form of galleries on the top floor, forming duplexes with a large amount of natural light make this space comfortable and unusual.

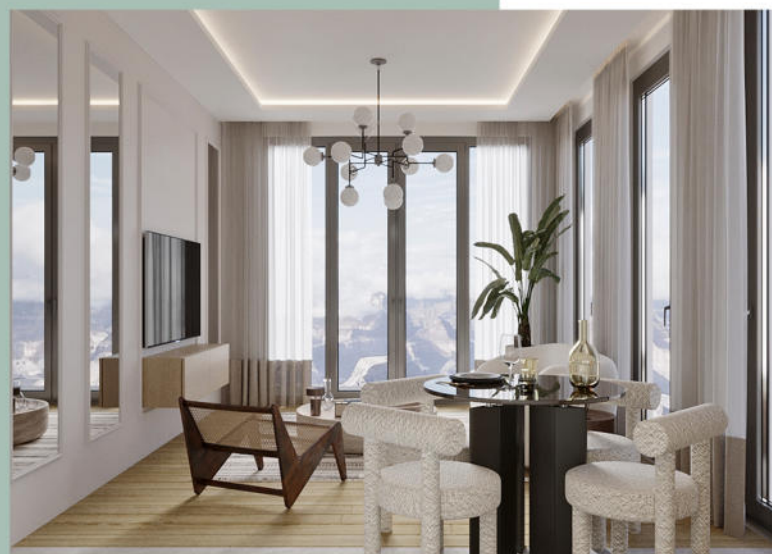
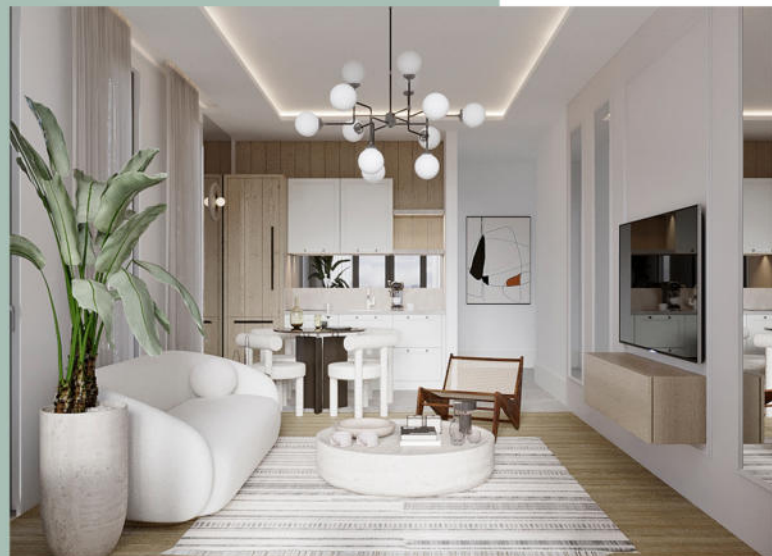
Open and free space within units initiates a very flexible organization and indicates potential transformations of the existing space with very small corrections.

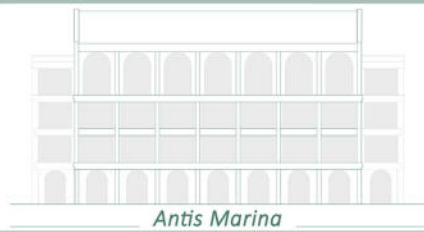
The building gives the impression of comfort and gives users a sense of security and belonging, further emphasizing that it is designed to suit modern man.





Antis Marina





Architecture

The concept of the building is based on a clean and simple form enriched with elements of Mediterranean architecture. Facades are enriched with stone and decorative borders that further emphasize the floors.

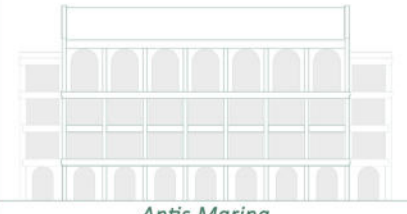
The combination of form, materialization, carefully arranged green areas and rationally used space proved to be quite a successful and functional building.

With its geometrically correct shape, complemented by a combination of rectangular and arched openings, the building continues on the tradition and character of the area in which it is located.

Terraces on the front facade in combination with the large front openings indicate that the interior space is in excellent communication with the exterior ambience, allowing the environment to become part of the interior.

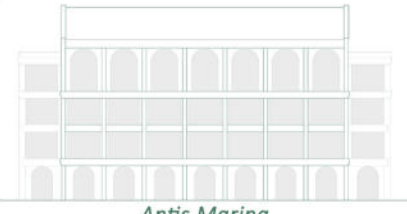
Potential problems caused by long periods of bright sunlight are solved with dark green shutters which perfectly fit into the environment.





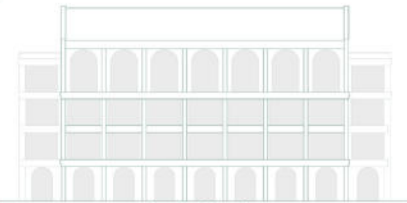
Antis Marina





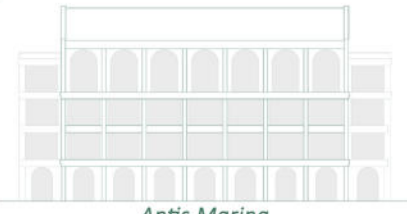
Antis Marina





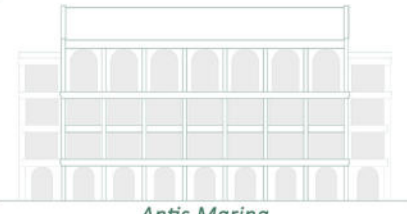
Antis Marina





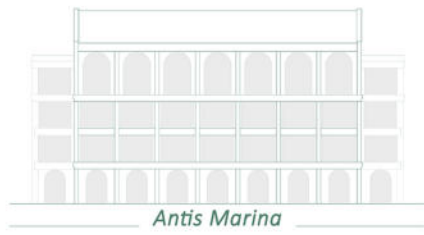
Antis Marina



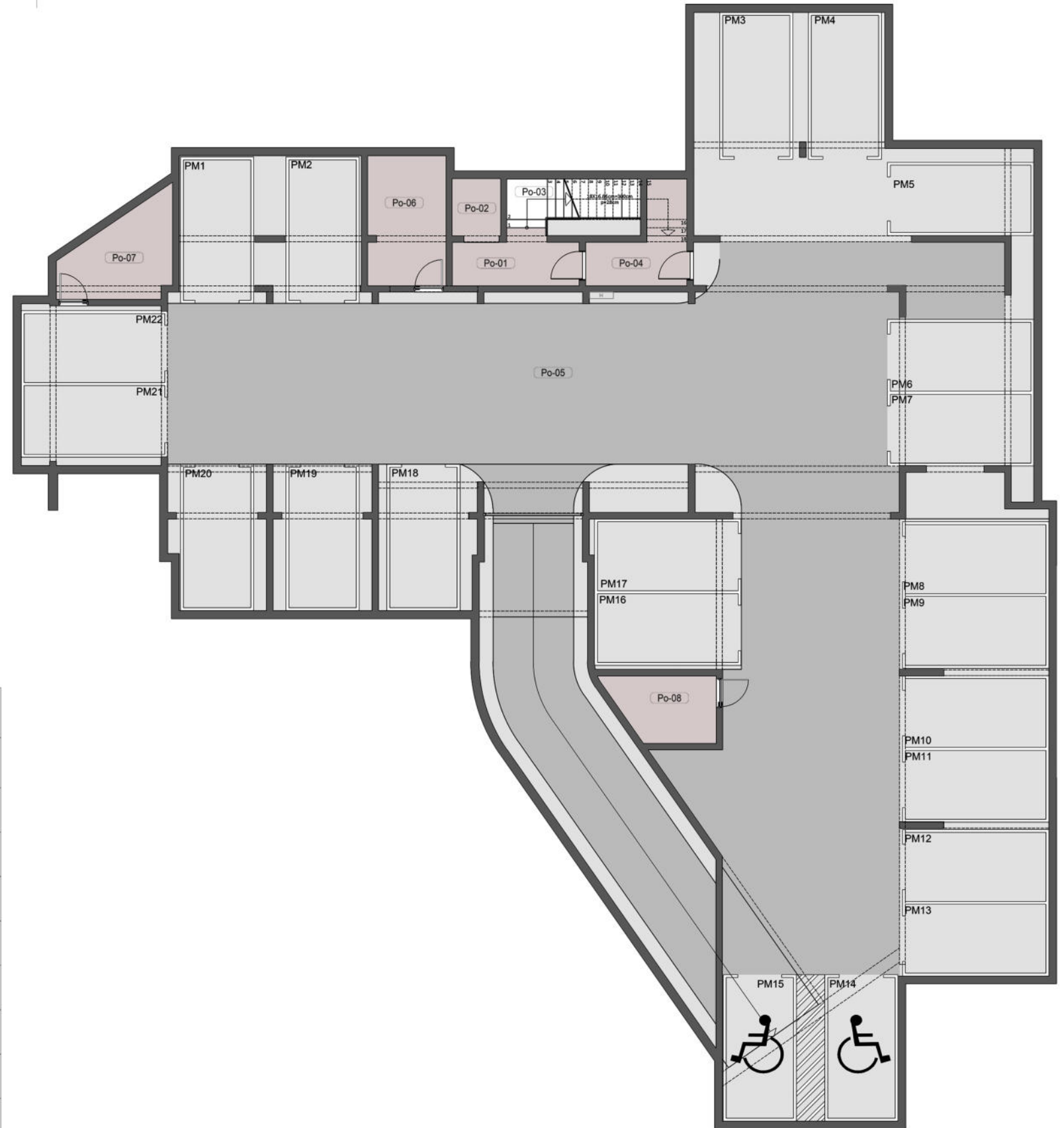
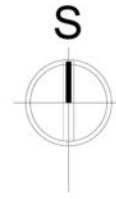


Antis Marina

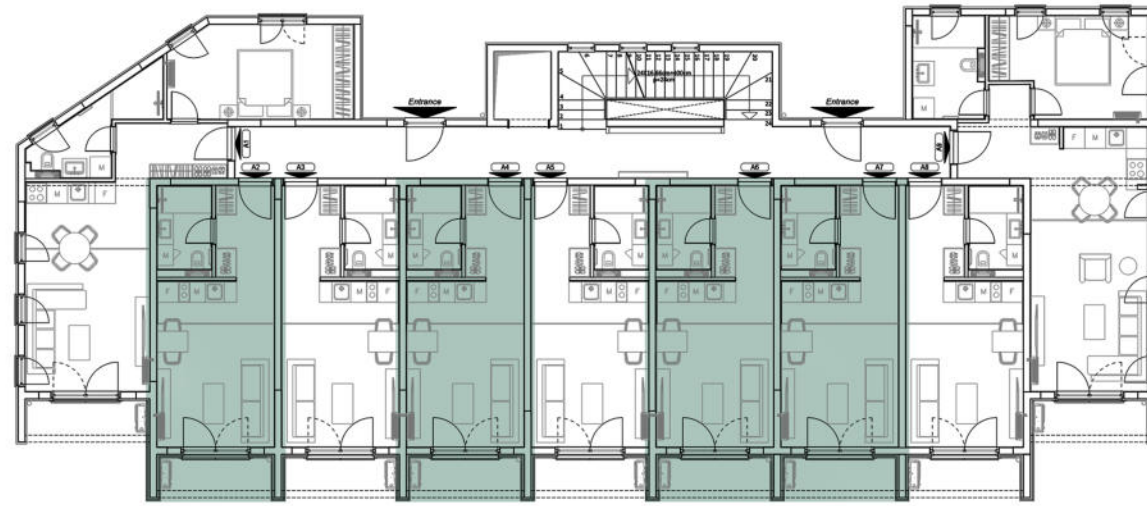
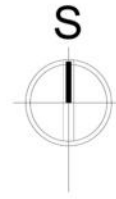
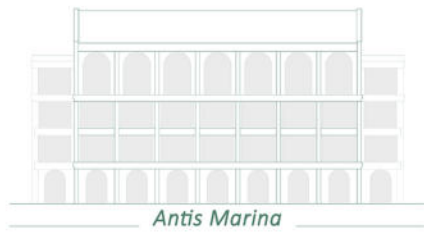




Antis Marina



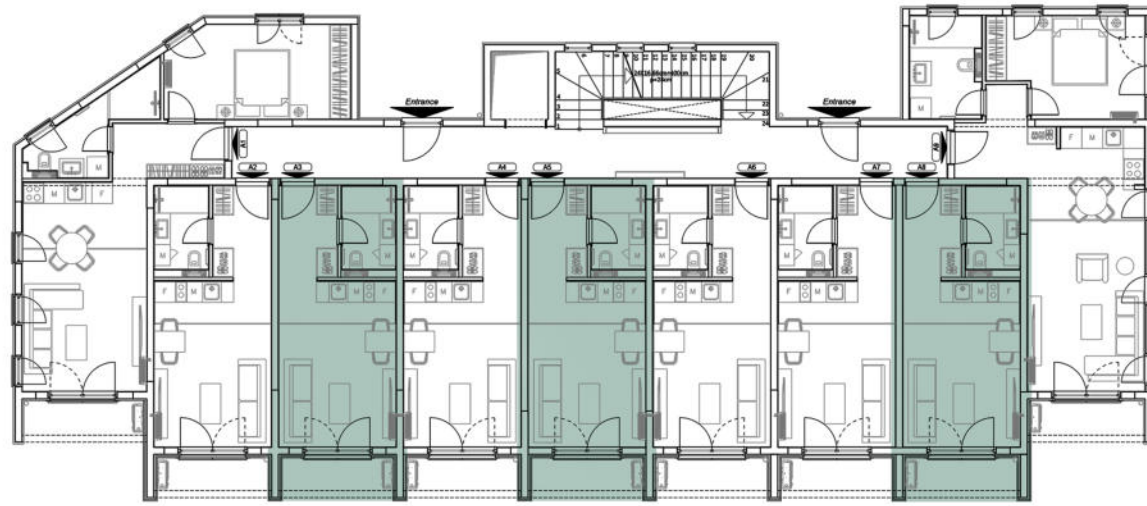
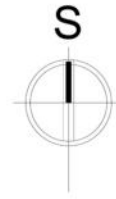
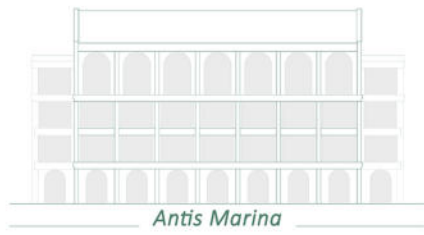
Basement		
No.	Room type	m ²
Po_01	Corridor	9.30
Po_02	Elevatir	3.25
Po_03	Stairs	6.70
Po_04	Buffer zone	5.80
Po_05	Garage	627.75
Po_06	Technical equipment	11.75
Po_07	Technical equipment	10.35
Po_08	Technical equipment	7.75
Total NET area of the basement:		682.65 m²



Apartment A2, A4, A6, A7

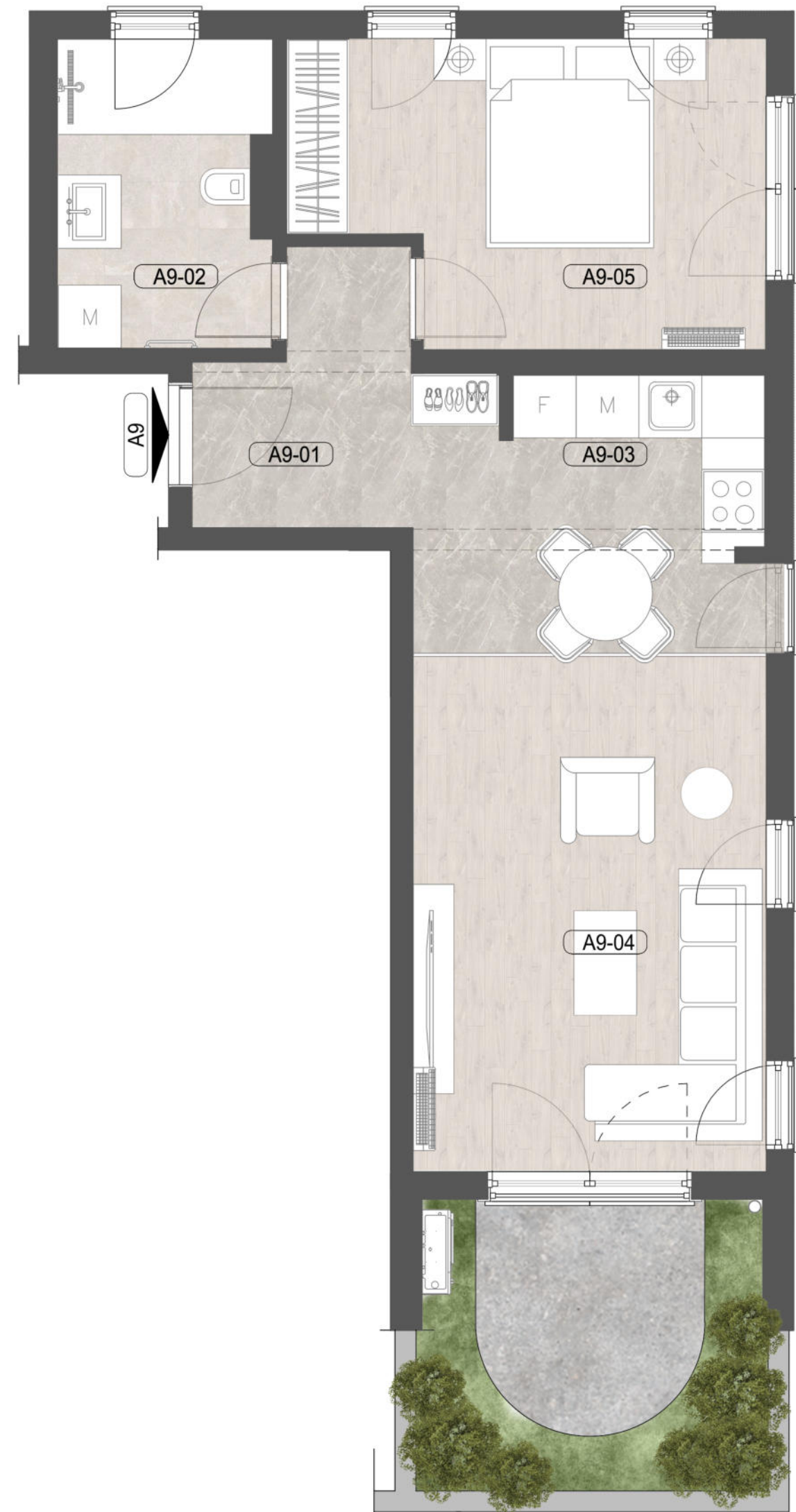
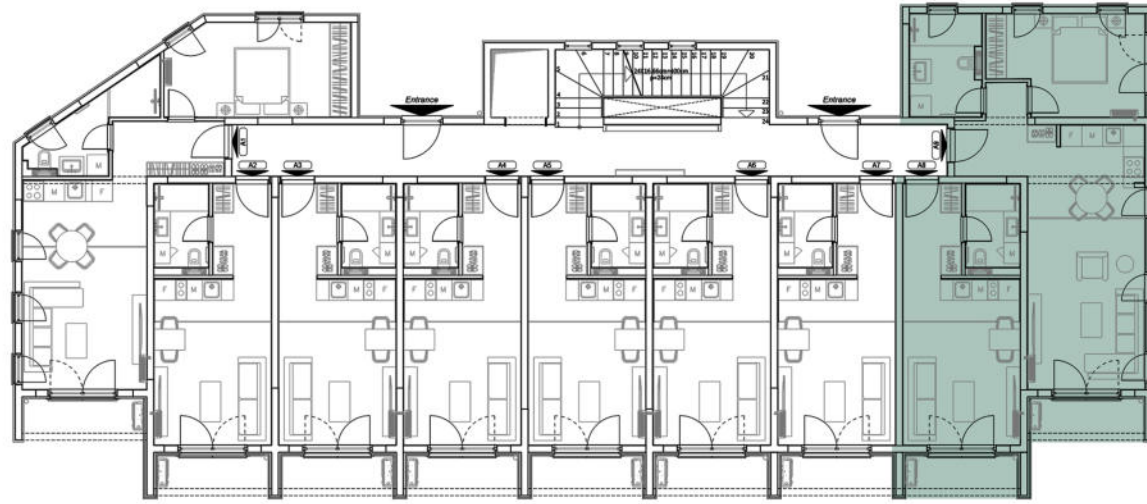
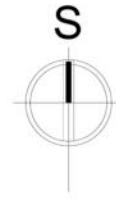
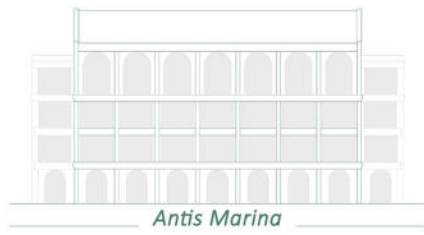
No.	Room type	m ²
A2_01	Corridor	5.85
A2_02	Bathroom	3.65
A2_03	Kitchen	2.75
A2_04	Living room	12.00

Total NET area of the apartment A2: 24.25 m²

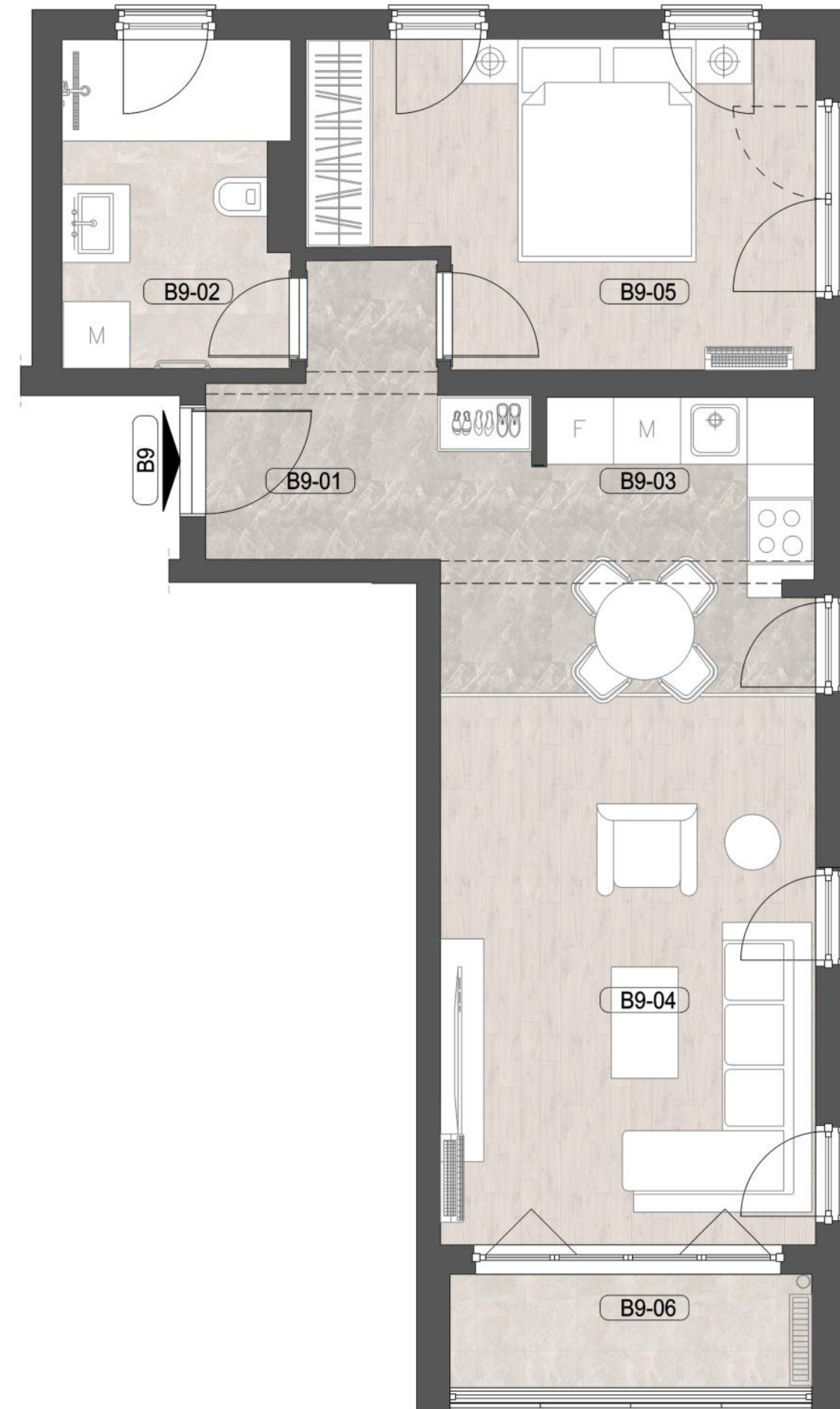
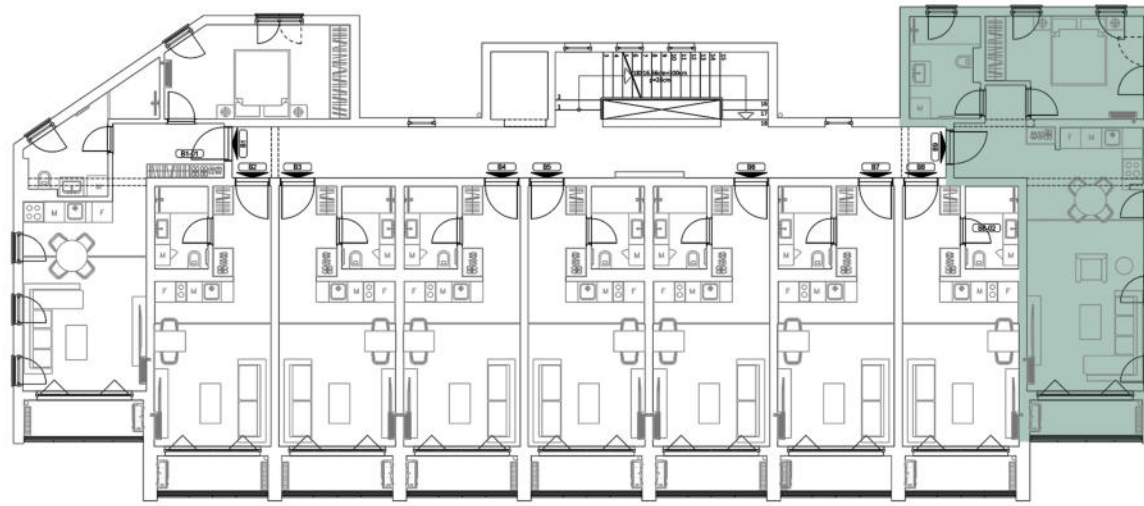
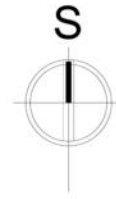
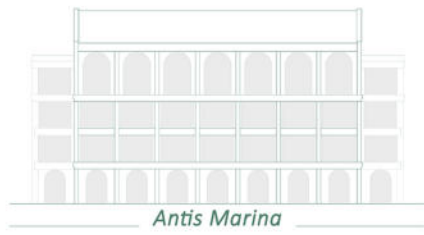


Apartments A3, A5, A8

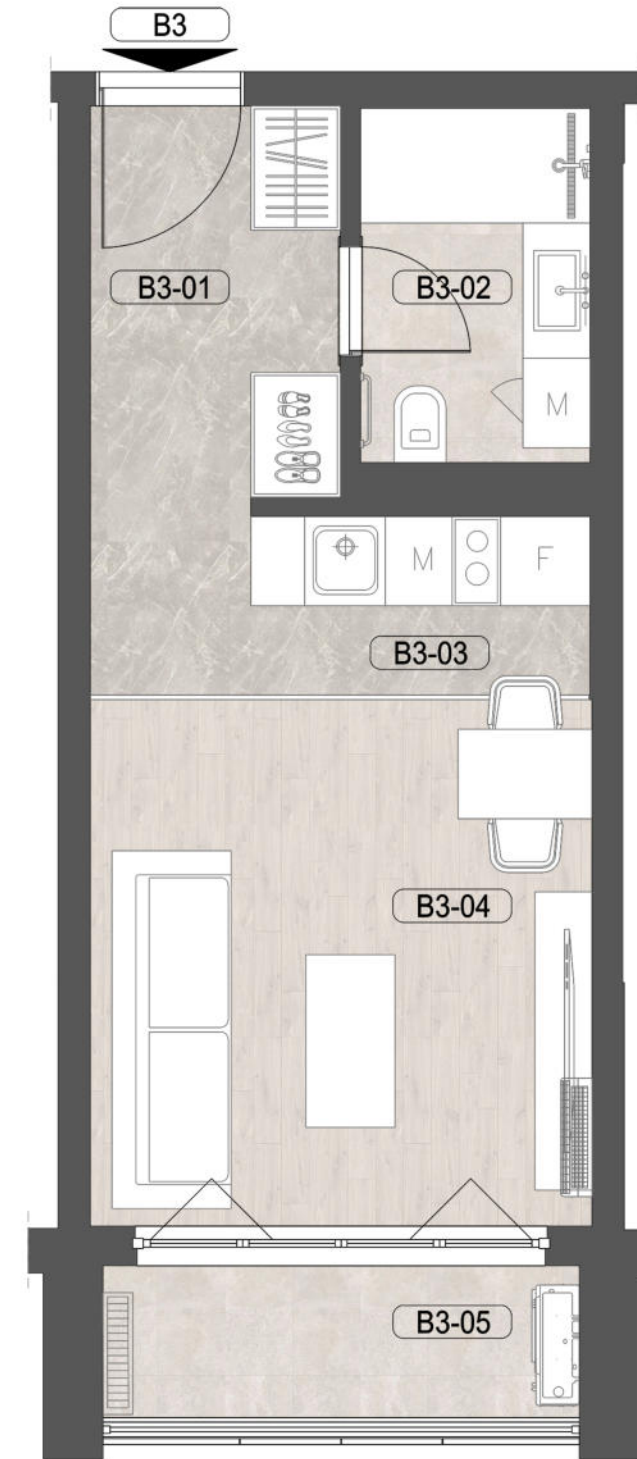
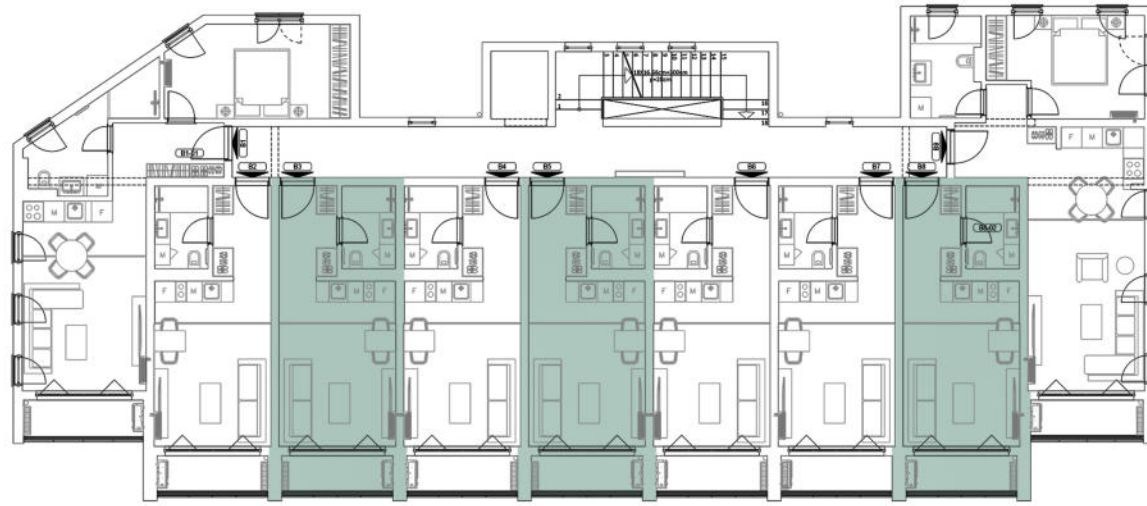
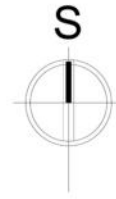
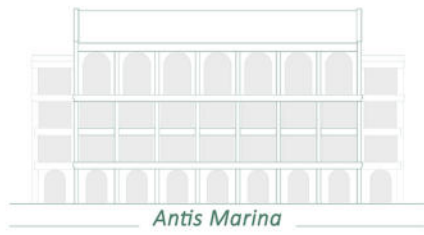
No.	Room type	m ²
A3_01	Corridor	5.85
A3_02	Bathroom	3.65
A3_03	Kitchen	2.75
A3_04	Living room	12.00
Total NET area of the apartment A3:		24.25 m²



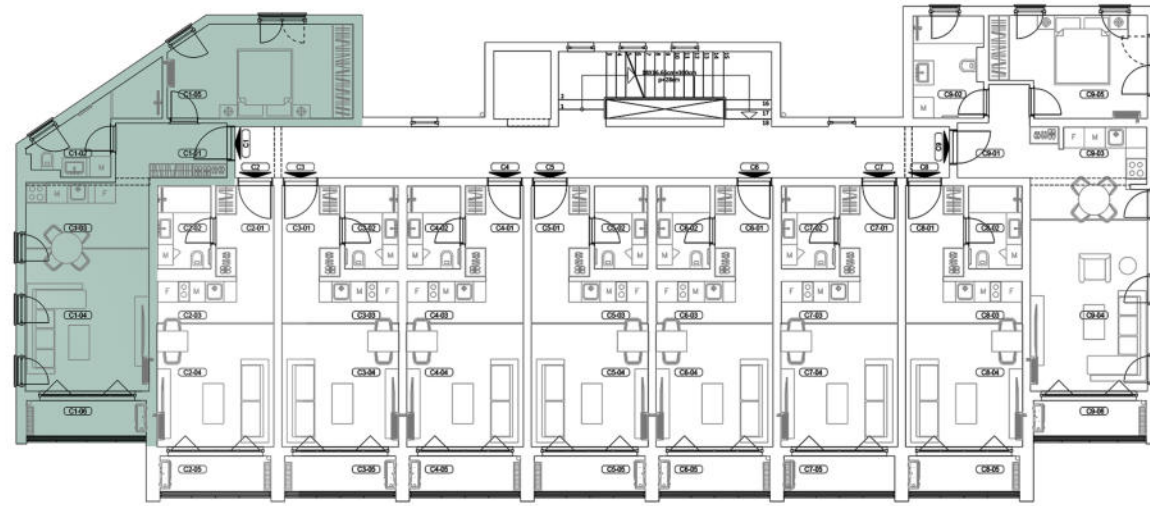
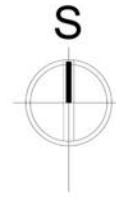
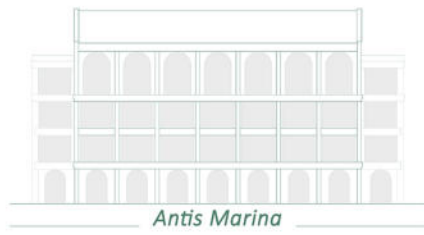
Apartment A9		
No.	Room type	m ²
A9_01	Corridor	5.80
A9_02	Bathroom	5.80
A9_03	Kitchen	7.65
A9_04	Living room	16.70
A9_05	Bedroom	12.20
Total NET area of the apartment A9:		48.15 m²



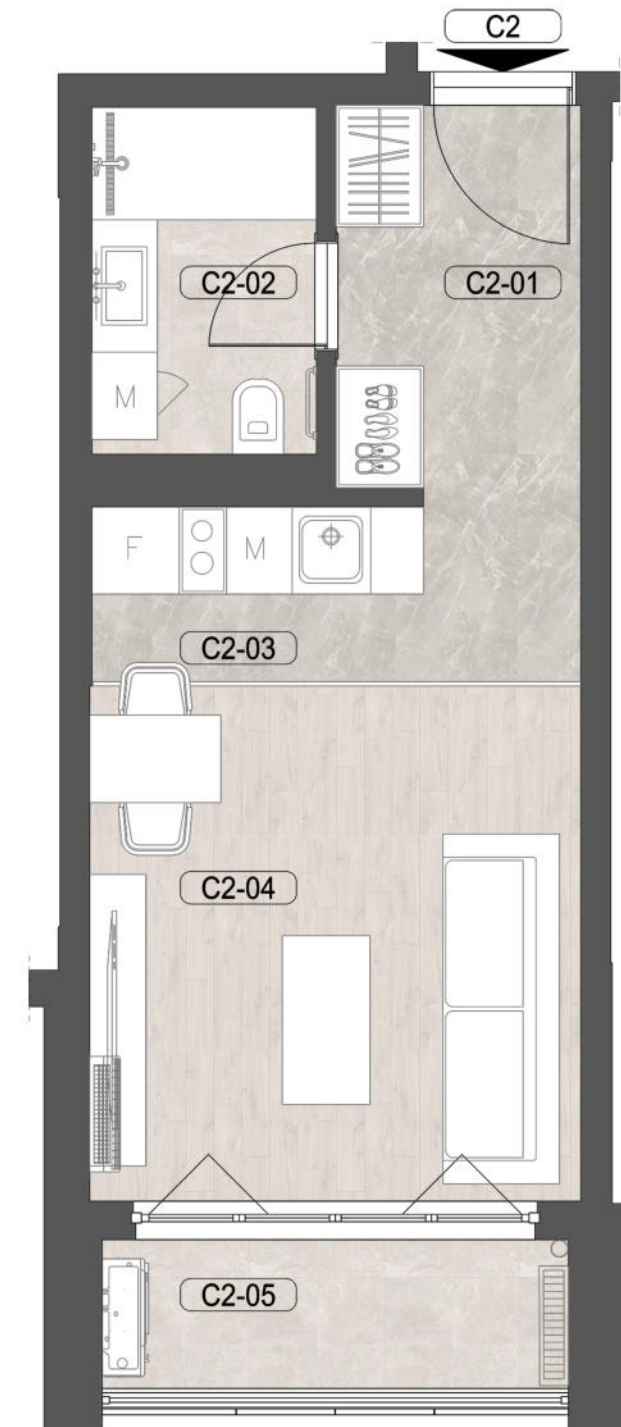
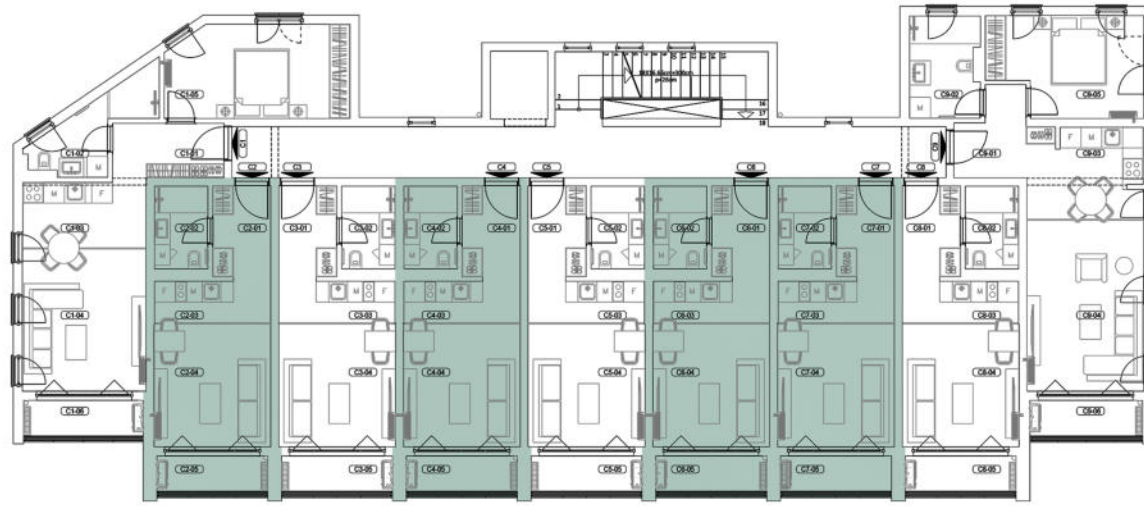
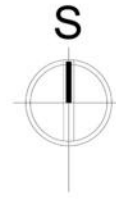
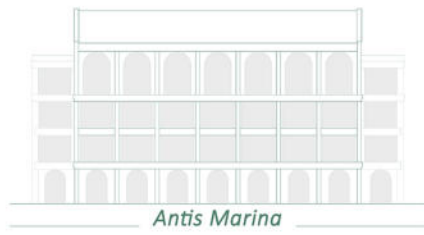
Apartment B9		
No.	Room type	m ²
B9_01	Corridor	5.80
B9_02	Bathroom	5.80
B9_03	Kitchen	7.60
B9_04	Living room	16.70
B9_05	Bedroom	12.20
B9_06	Terrace	3.90
Total NET area of the apartment B9:		52.00 m²



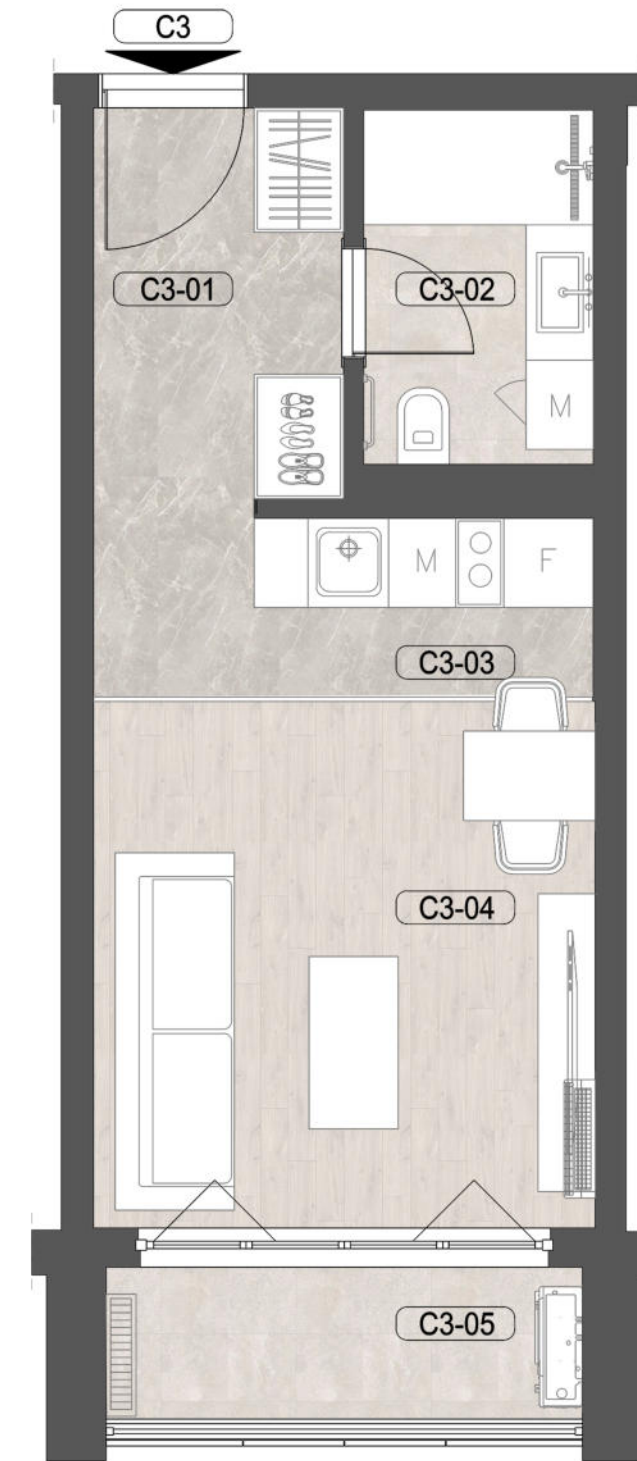
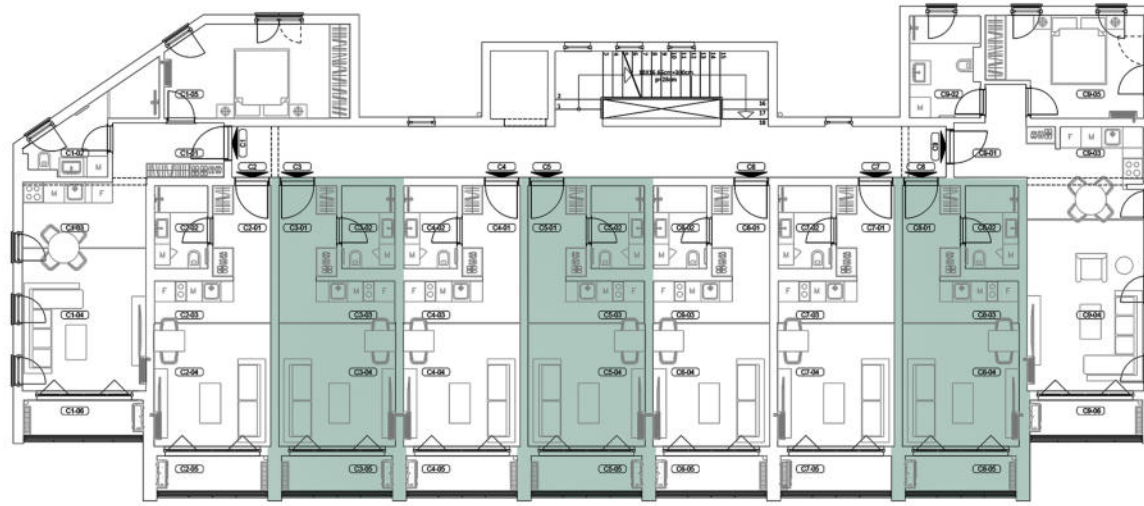
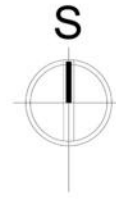
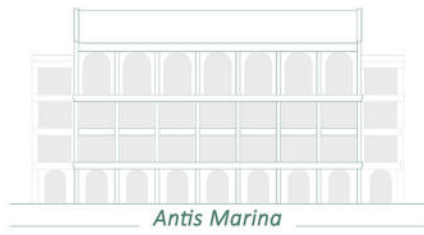
Apartments B3, B5, B8		
No.	Room type	m ²
B3_01	Corridor	5.85
B3_02	Bathroom	3.65
B3_03	Kitchen	2.75
B3_04	Living room	12.00
B3_05	Terrace	3.80
Total NET area of the apartment B3:		28.05 m²



Apartment C1		
No.	Room type	m ²
C1_01	Corridor	7.00
C1_02	Bathroom	5.60
C1_03	Kitchen	4.90
C1_04	Living room	14.75
C1_05	Bedroom	14.10
C1_06	Terrace	4.00
Total NET area of the apartment C1:		50.35 m²



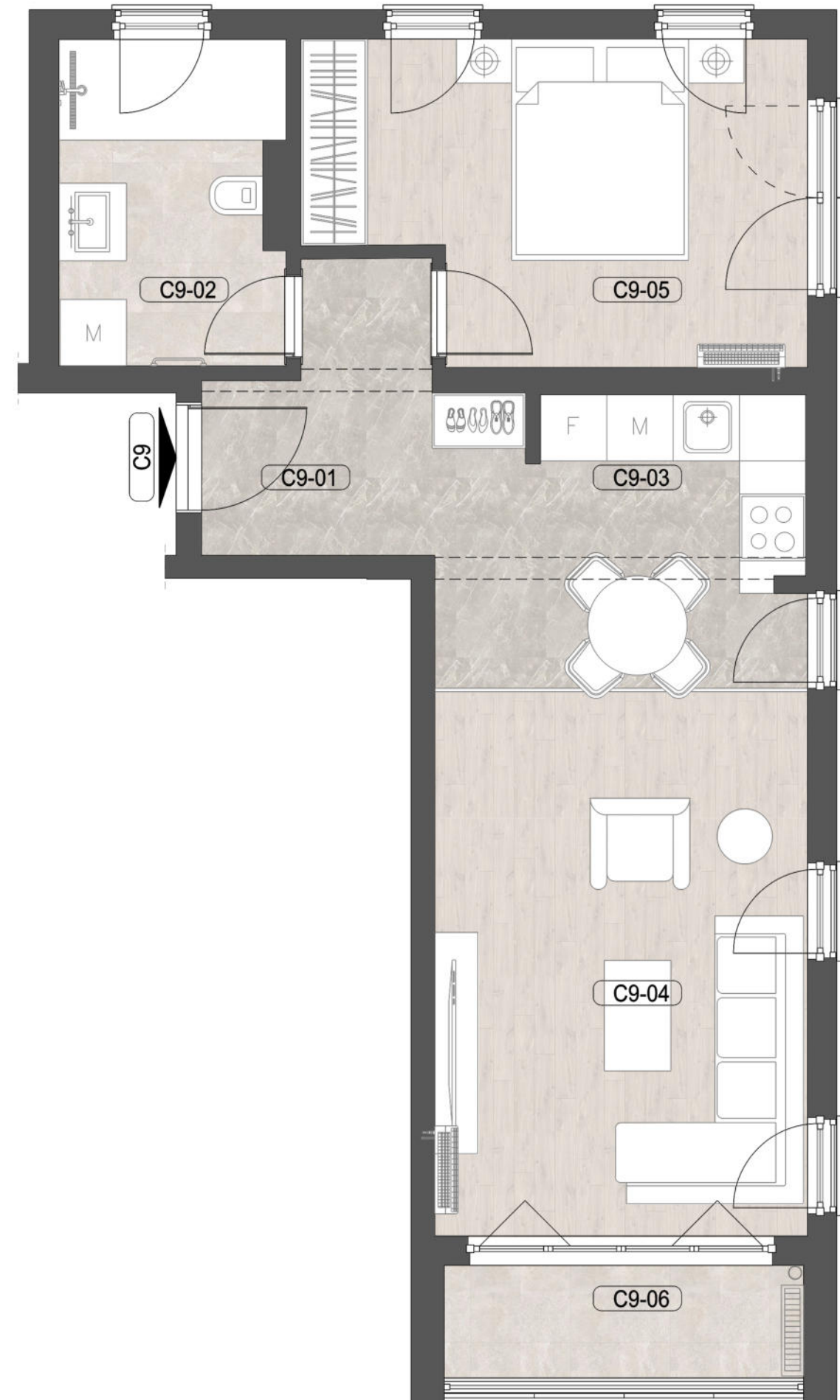
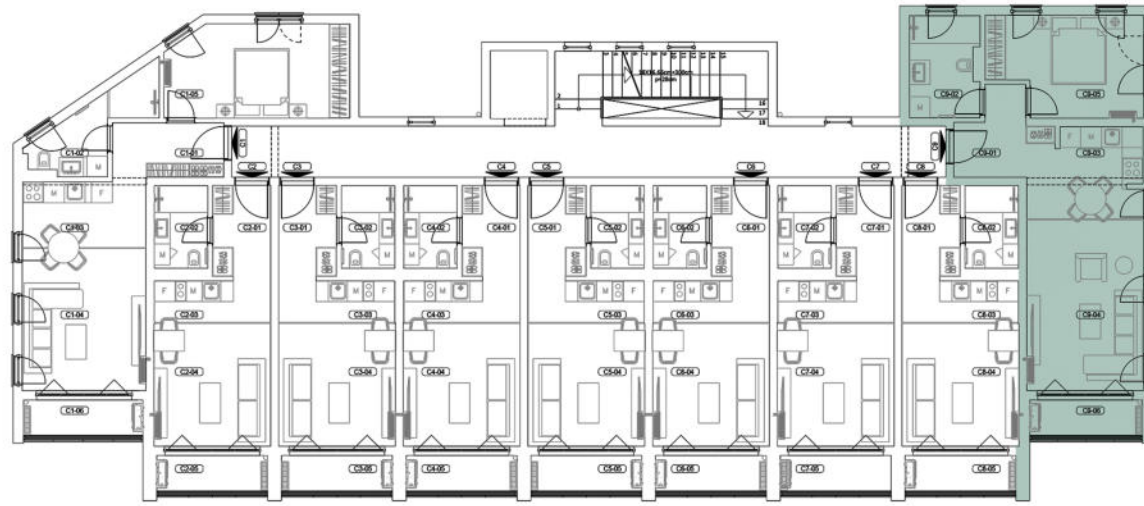
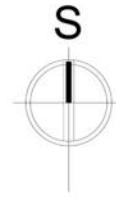
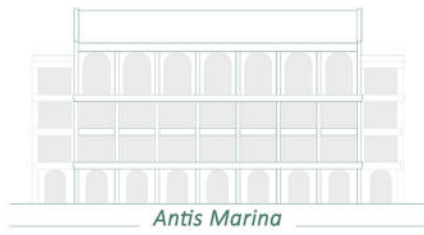
Apartments C2, C4, C6, C7		
No.	Room type	m ²
C2_01	Corridor	5.85
C2_02	Bathroom	3.65
C2_03	Kitchen	2.75
C2_04	Living room	12.00
C2_05	Terasa	3.80
Total NET area of the apartment C2:		28.05 m²



Apartments C3, C5, C8

No.	Room type	m ²
C3_01	Corridor	5.85
C3_02	Bathroom	3.65
C3_03	Kitchen	2.75
C3_04	Living room	12.00
C3_05	Terrace	3.80

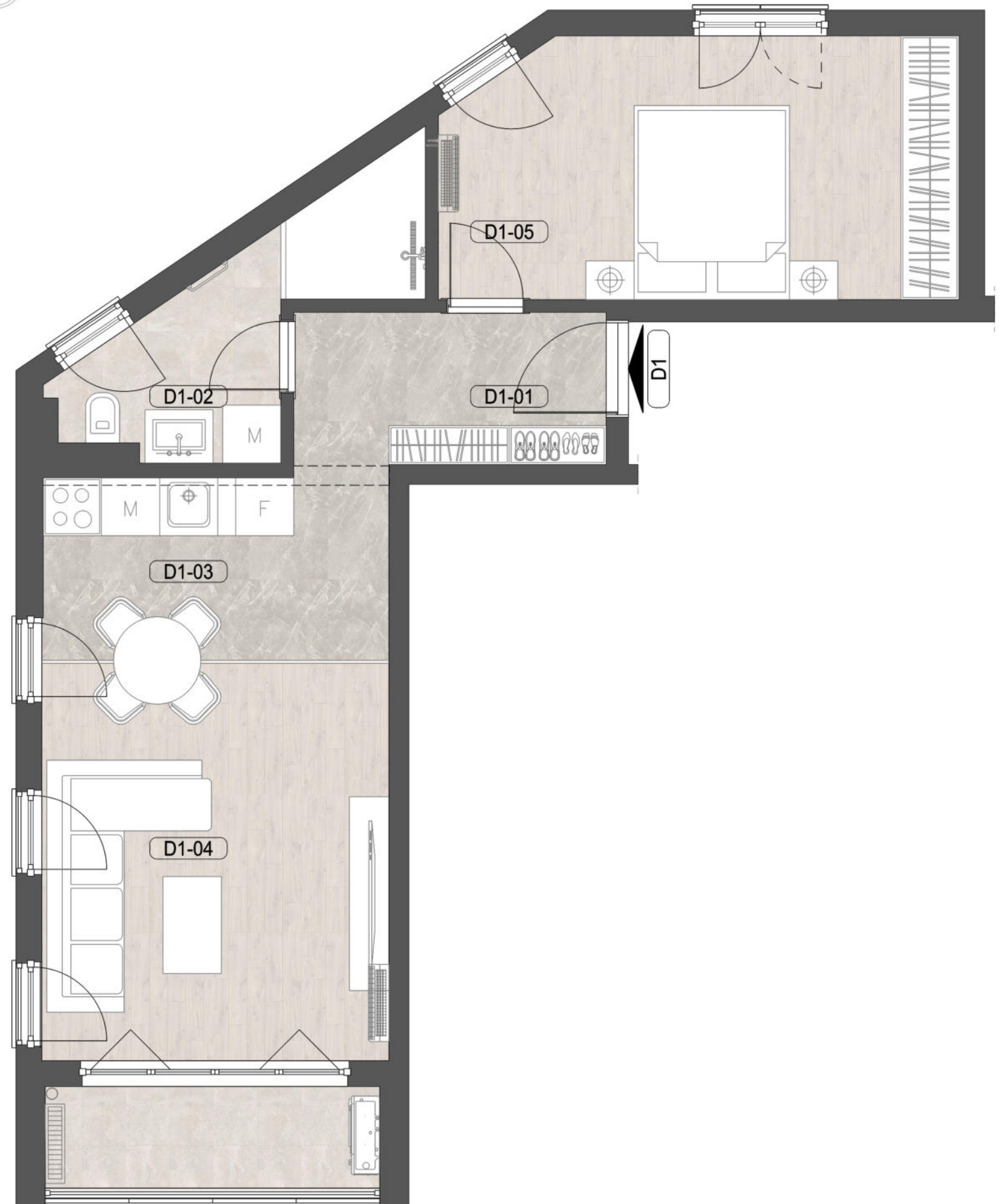
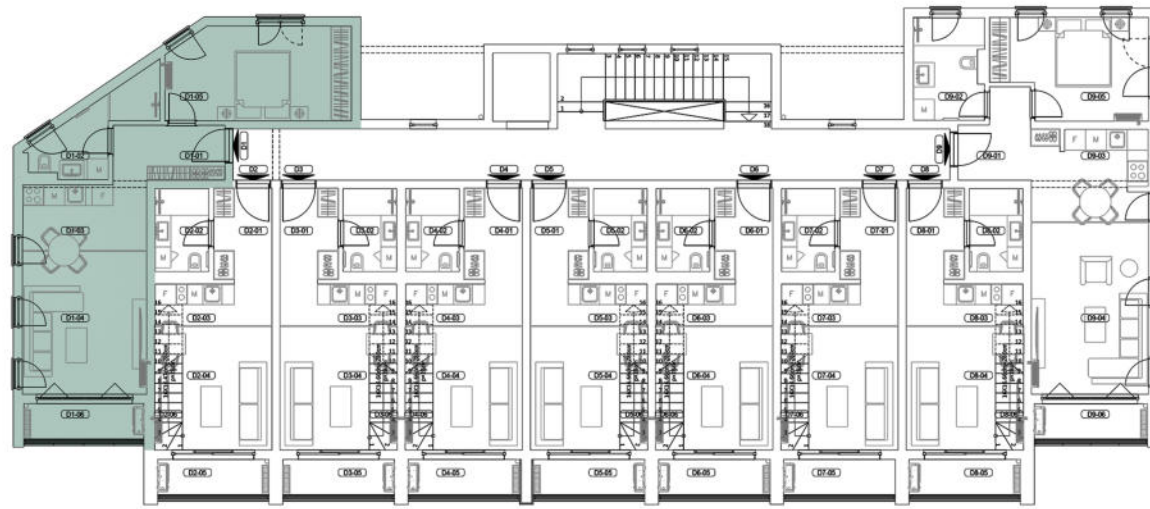
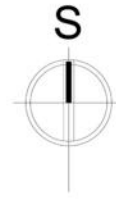
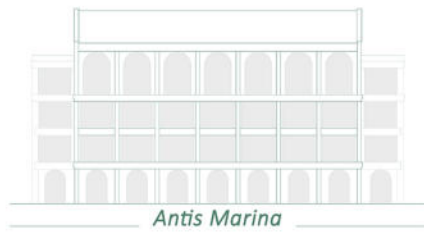
Total NET area of the apartment C3: 28.05 m²



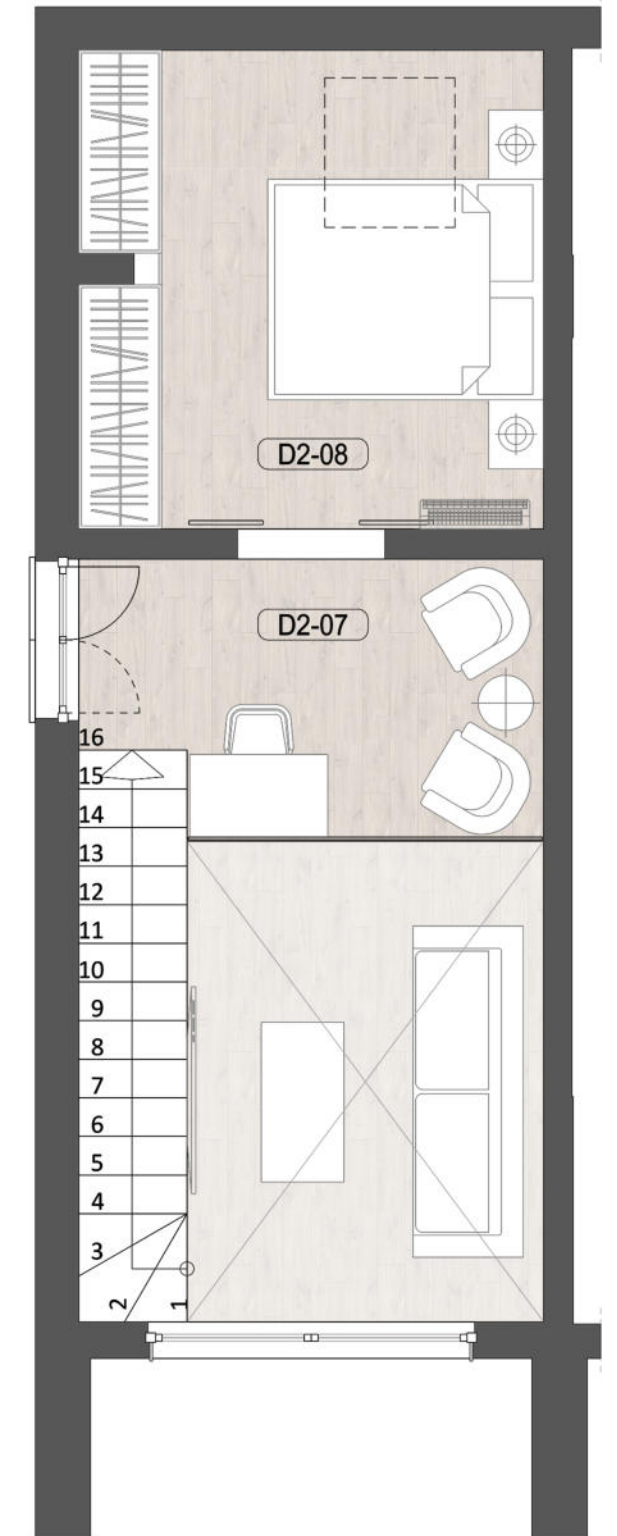
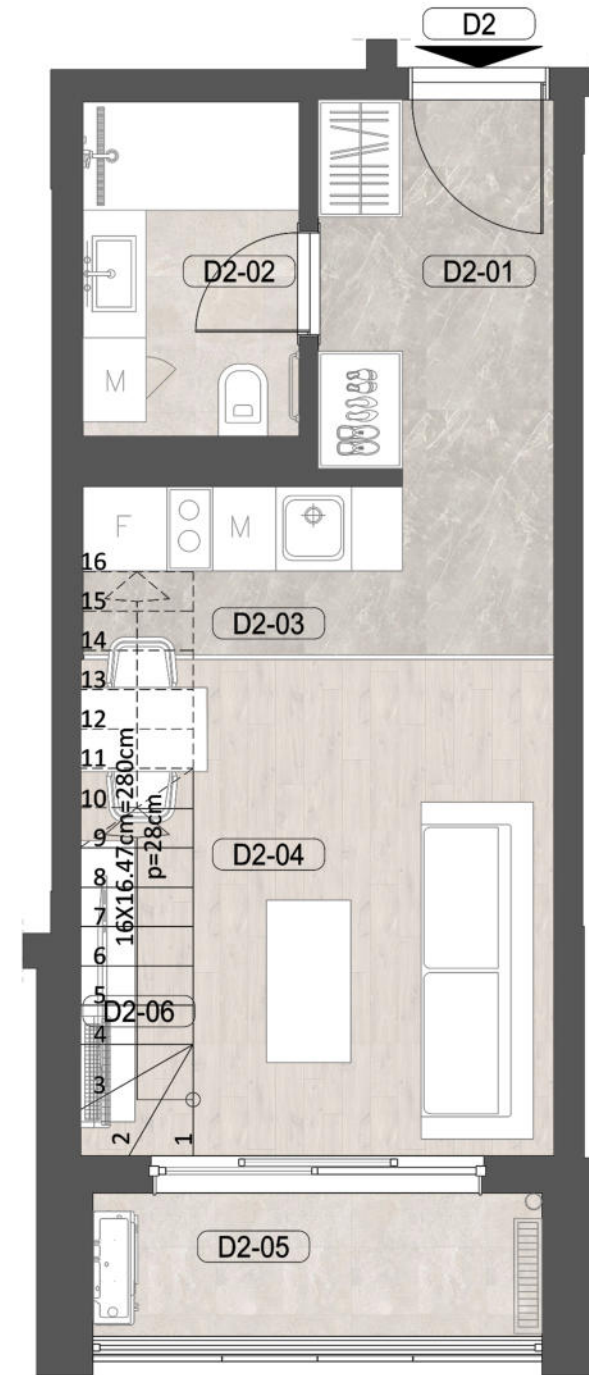
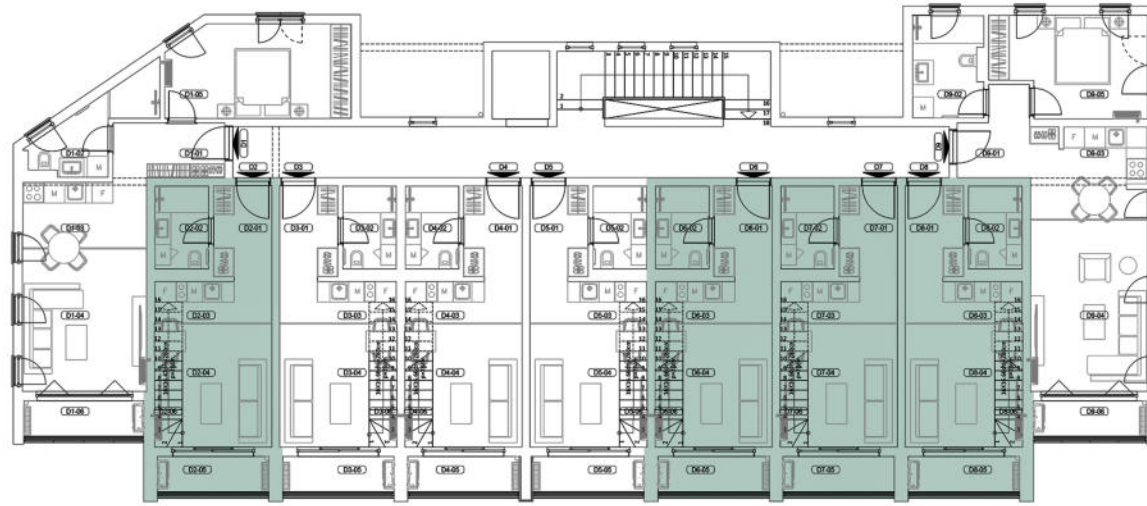
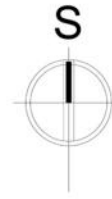
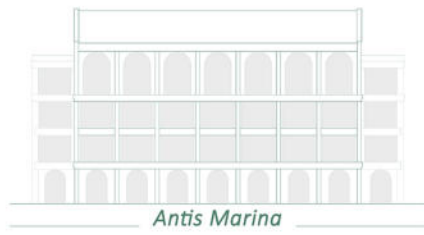
Apartment C9

No.	Room type	m ²
C9_01	Corridor	5.80
C9_02	Bathroom	5.80
C9_03	Kitchen	7.60
C9_04	Living room	16.70
C9_05	Bedroom	12.20
C9_06	Terrace	3.90

Total NET area of the apartment C9: 52.00 m²



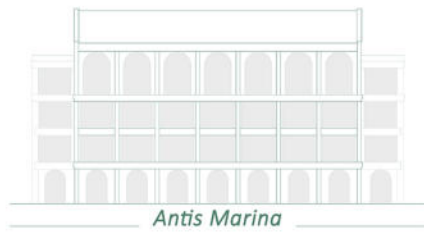
Apartment D1		
No.	Room type	m ²
D1_01	Corridor	7.00
D1_02	Bathroom	5.60
D1_03	Kitchen	4.90
D1_04	Living room	14.75
D1_05	Bedroom	14.10
D1_06	Terrace	4.00
Total NET area of the apartment D1:		50.35 m²



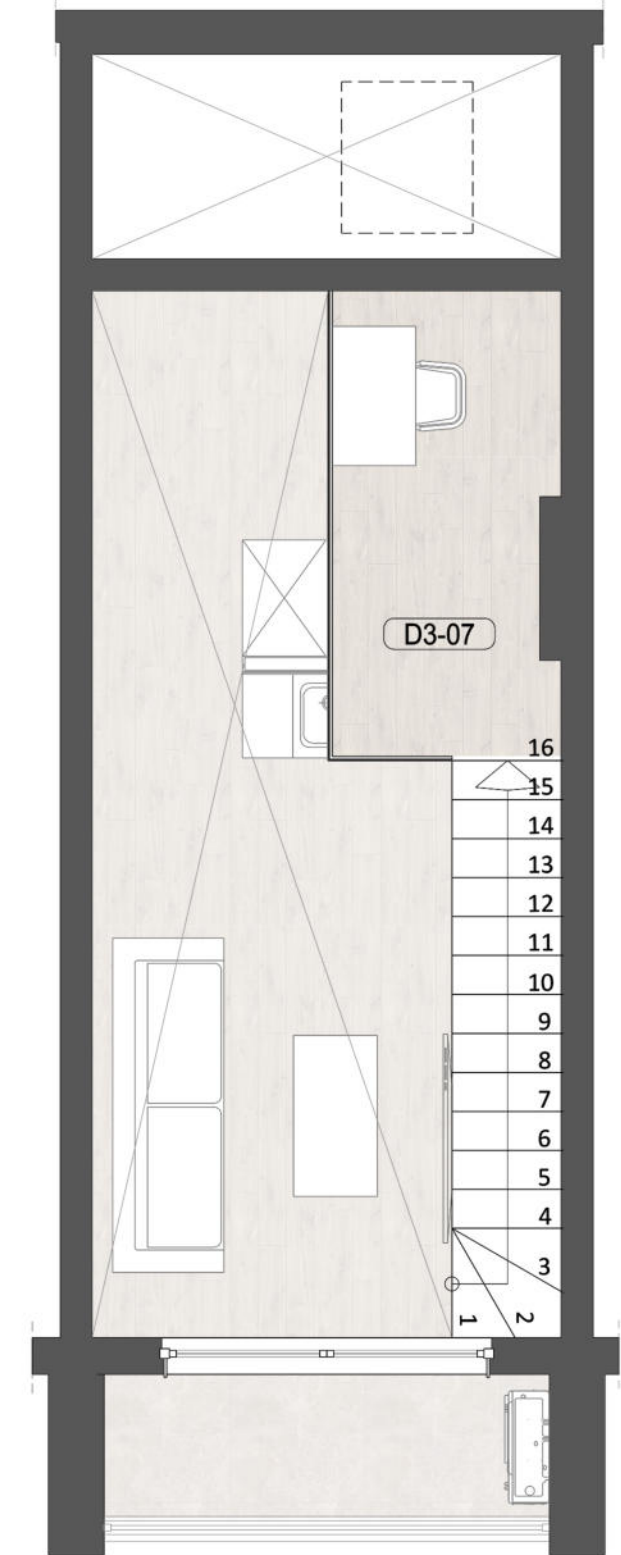
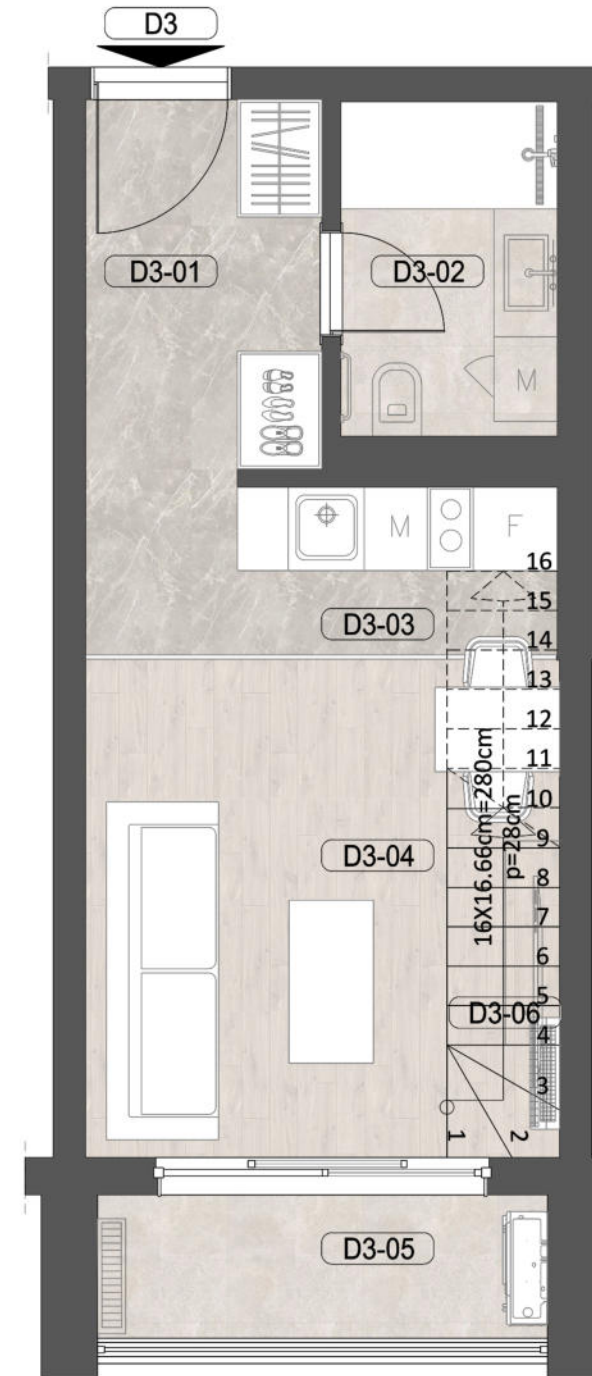
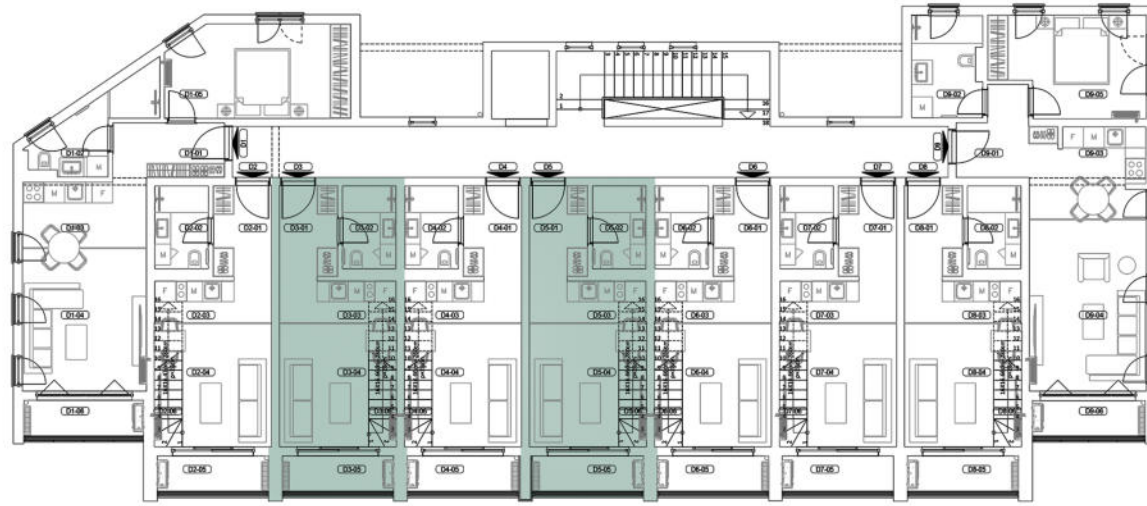
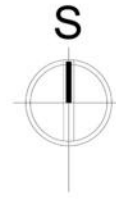
Apartments D2, D6, D7, D8

No.	Room type	m ²
D2_01	Corridor	5.85
D2_02	Bathroom	3.65
D2_03	Kitchen	2.75
D2_04	Living room	10.50
D2_05	Terrace	3.80
D2_06	Stairs	3.25
D2_07	Gallery	6.40
D2_08	Bedroom	11.70

Total NET area of the apartment D2: 47.90 m²



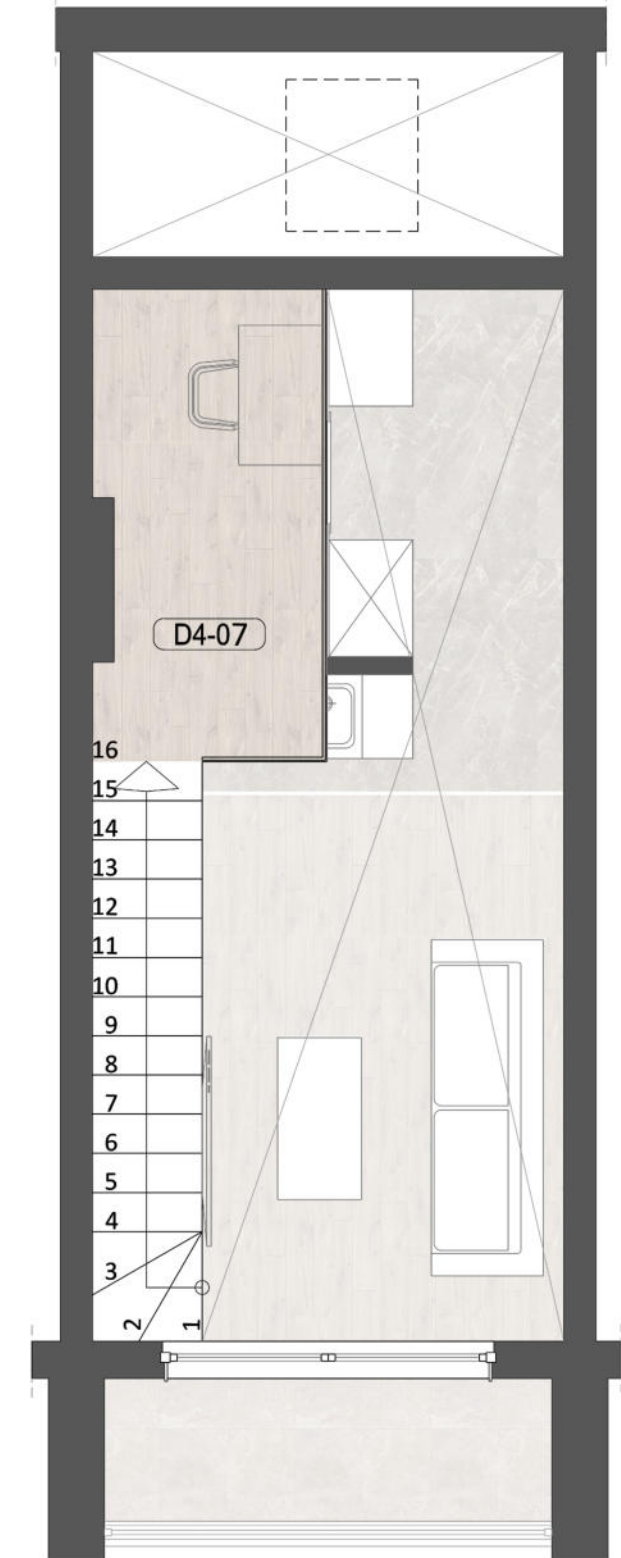
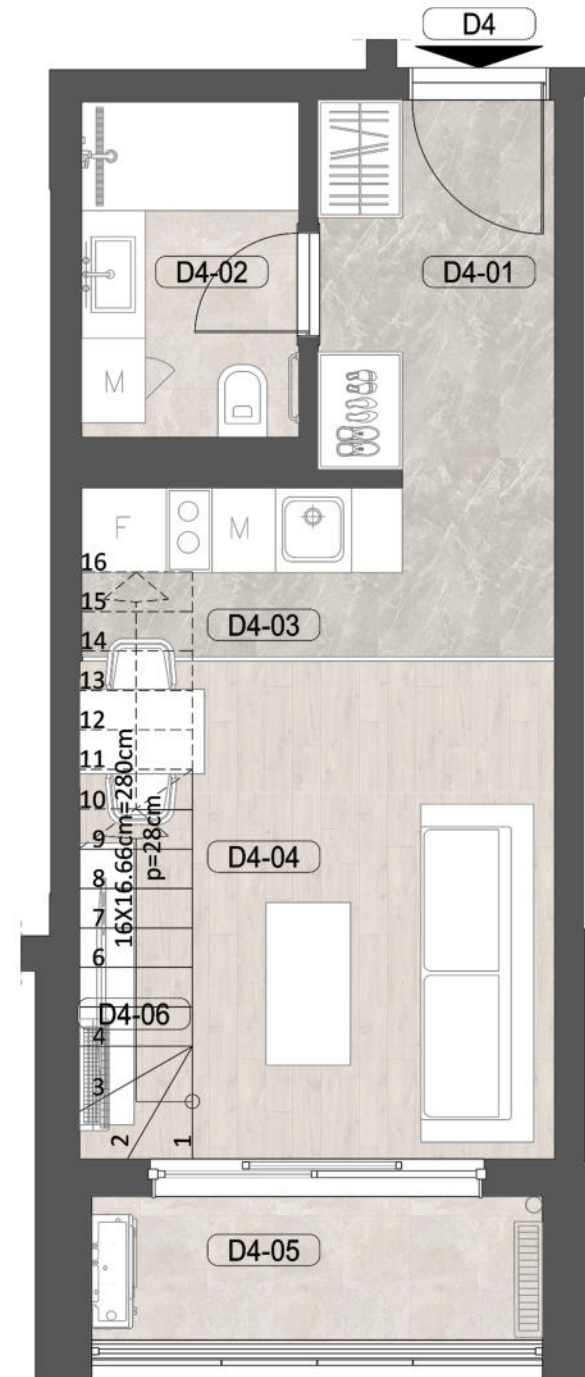
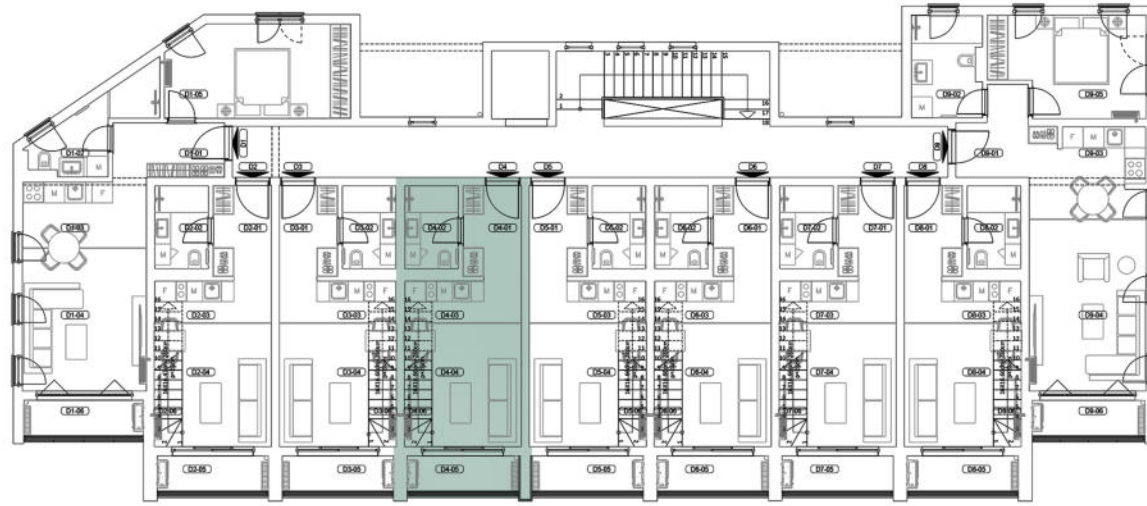
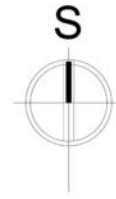
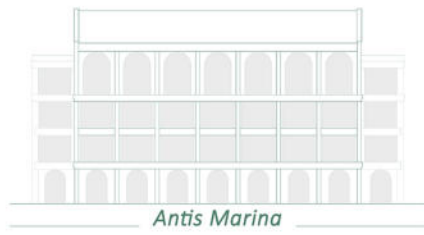
Antis Marina



Apartment D3, D5

No.	Room type	m ²
D3_01	Corridor	5.85
D3_02	Bathroom	3.65
D3_03	Kitchen	2.75
D3_04	Living room	10.50
D3_05	Terrace	3.80
D3_06	Stairs	3.25
D3_07	Gallery	5.70

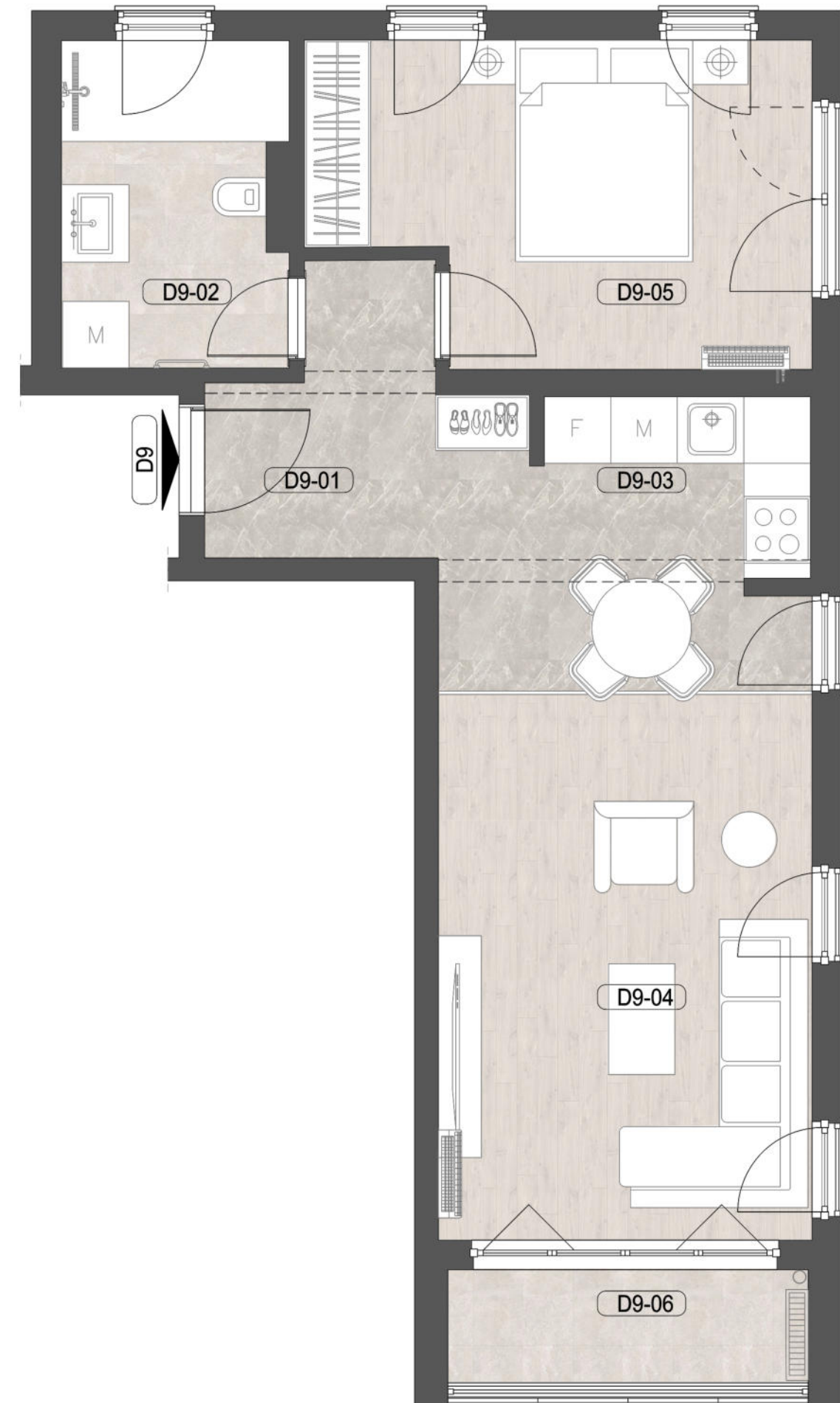
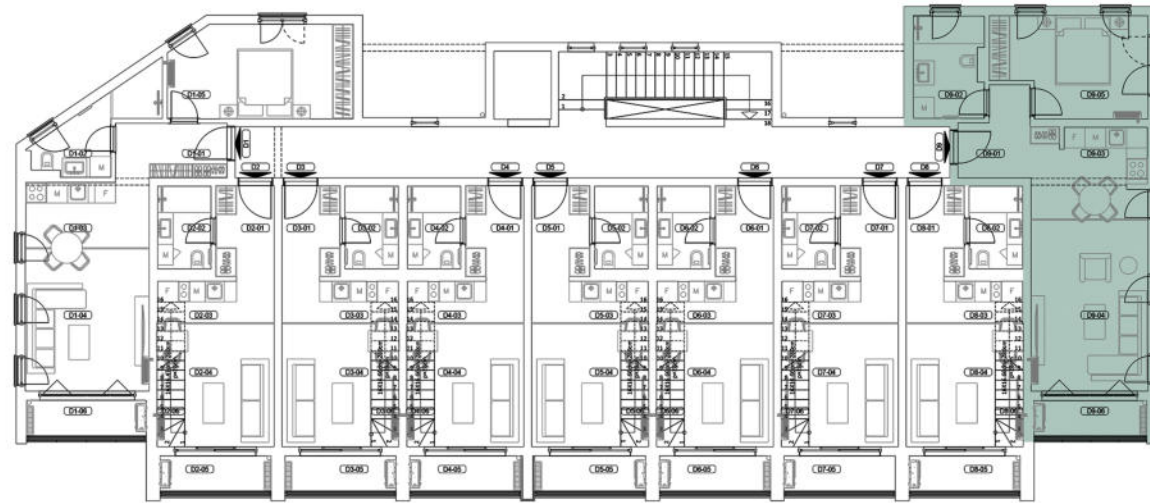
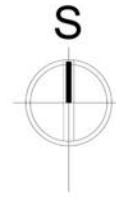
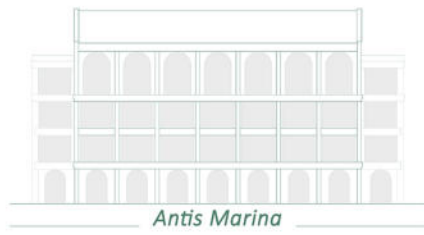
Total NET area of the apartment D3: 35.50 m²



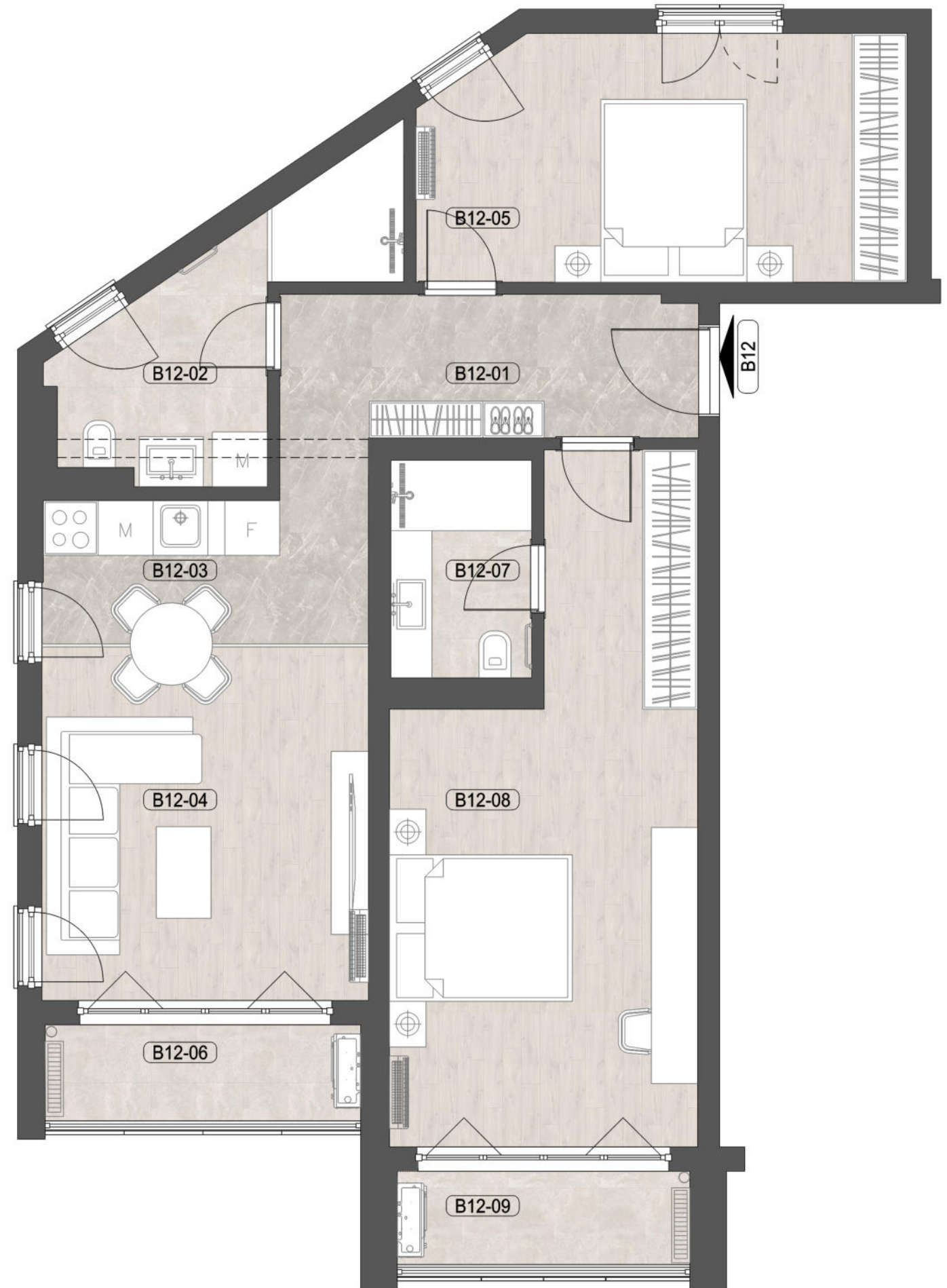
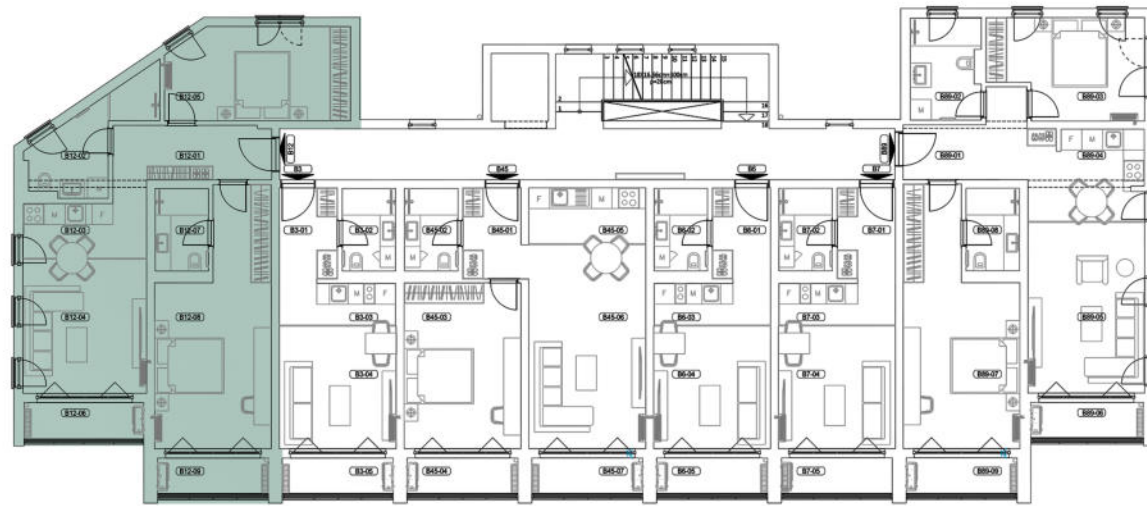
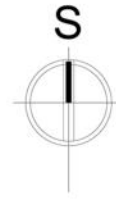
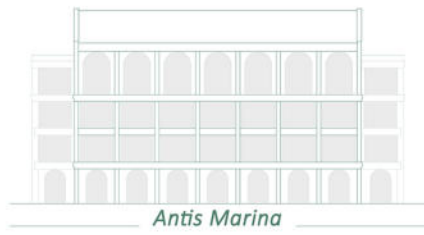
Apartment D4

No.	Room type	m ²
D4_01	Corridor	5.85
D4_02	Bathroom	3.65
D4_03	Kitchen	2.75
D4_04	Living room	10.50
D4_05	Terrace	3.80
D4_06	Stairs	3.25
D4_07	Gallery	5.70

Total NET area of the apartment D4: 35.50 m²



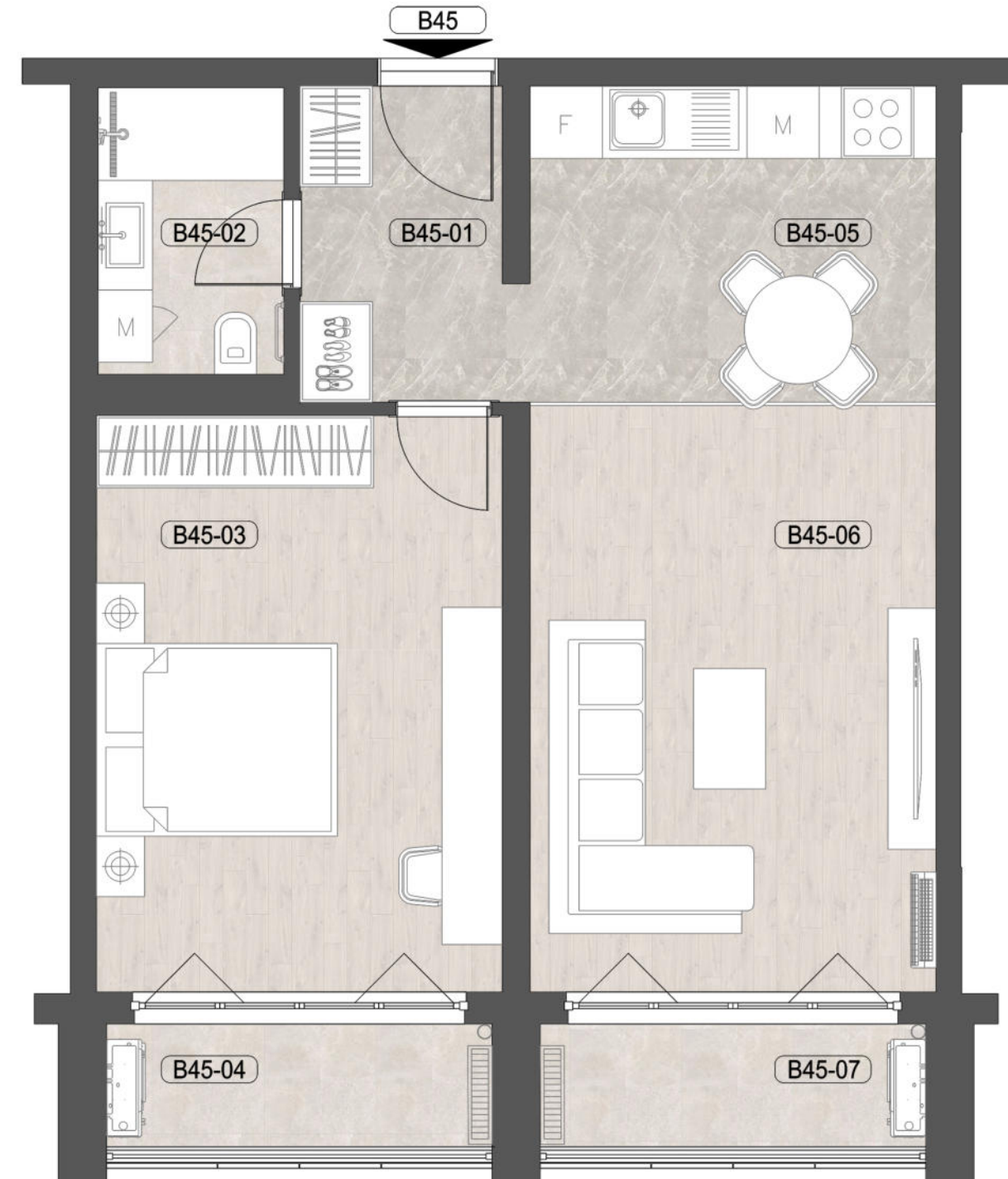
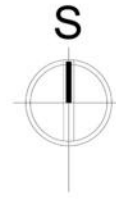
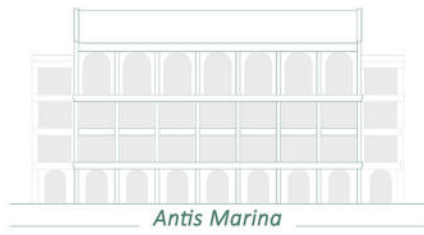
Apartment D9		
No.	Room type	m ²
D9_01	Corridor	5.80
D9_02	Bathroom	5.80
D9_03	Kitchen	7.60
D9_04	Living room	16.70
D9_05	Bedroom	12.20
D9_06	Terrace	3.90
Total NET area of the apartment D9:		52.00 m²



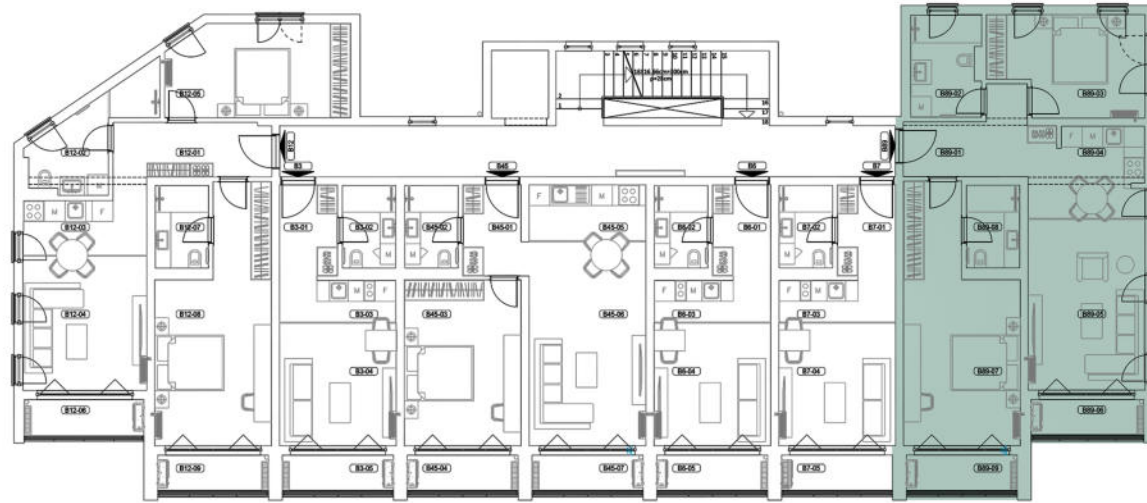
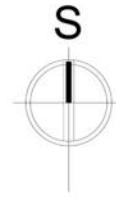
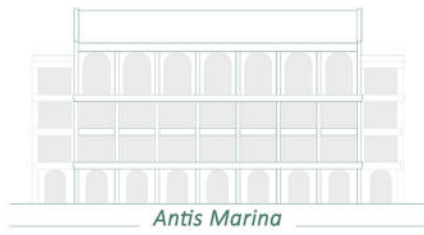
Apartment B12

No.	Room type	m ²
B12_01	Corridor	9.40
B12_02	Bathroom	6.90
B12_03	Kitchen	4.15
B12_04	Living room	13.80
B12_05	Bedroom	14.10
B12_06	Terrace	4.00
B12_07	Bathroom	3.65
B12_08	Bedroom	21.00
B12_09	Terrace	3.80

Total NET area of the apartment B12: 80.80 m²



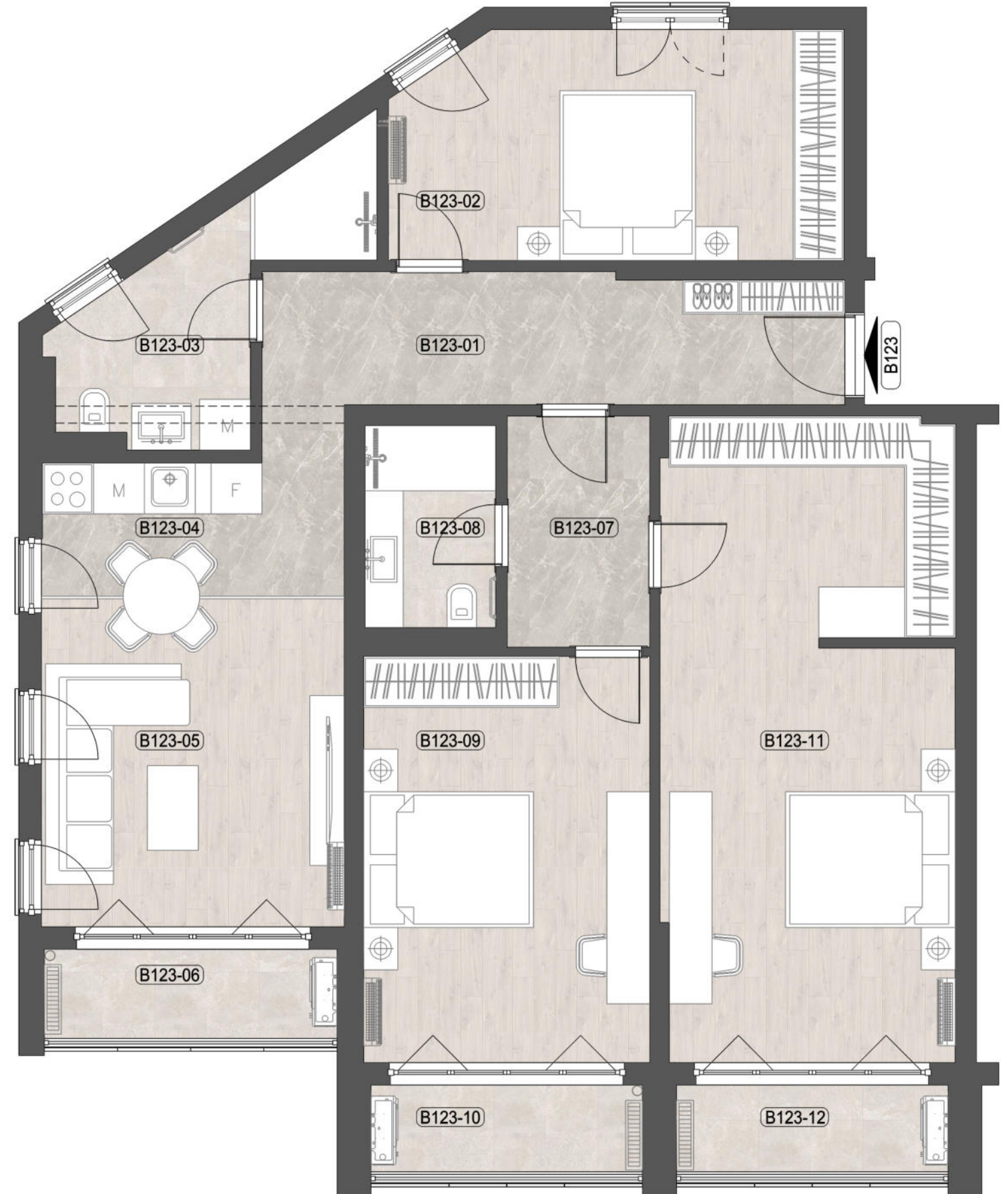
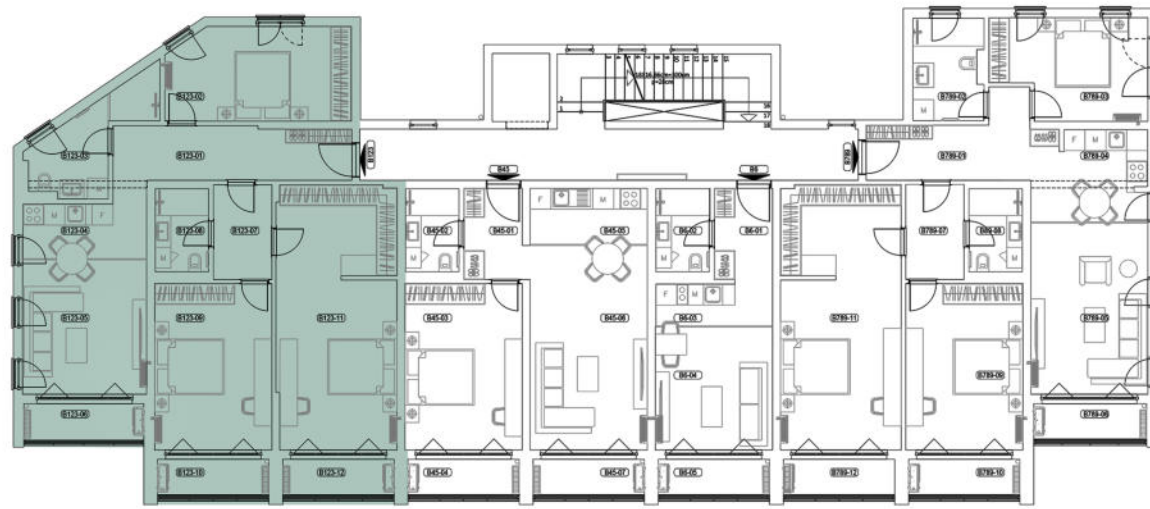
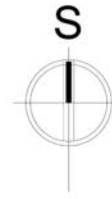
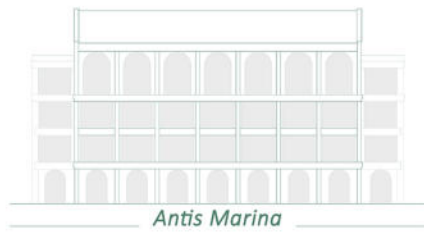
Apartment B45		
		m ²
B45_01	Corridor	4.60
B45_02	Bathroom	3.65
B45_03	Bedroom	16.15
B45_04	Terrace	3.80
B45_05	Kitchen	5.50
B45_05	Living room	19.80
B45_05	Terrace	3.80
Total NET area of the apartment B45:		57.30 m²



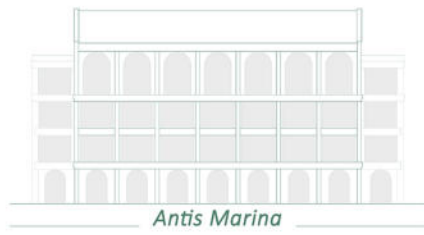
Apartment B89

No.	Room type	m ²
B89_01	Corridor	8.20
B89_02	Bathroom	5.80
B89_03	Bedroom	12.20
B89_04	Kitchen	4.70
B89_05	Living room	19.60
B89_06	Terrace	3.90
B89_07	Bedroom	20.85
B89_08	Bathroom	3.65
B89_09	Terrace	3.80

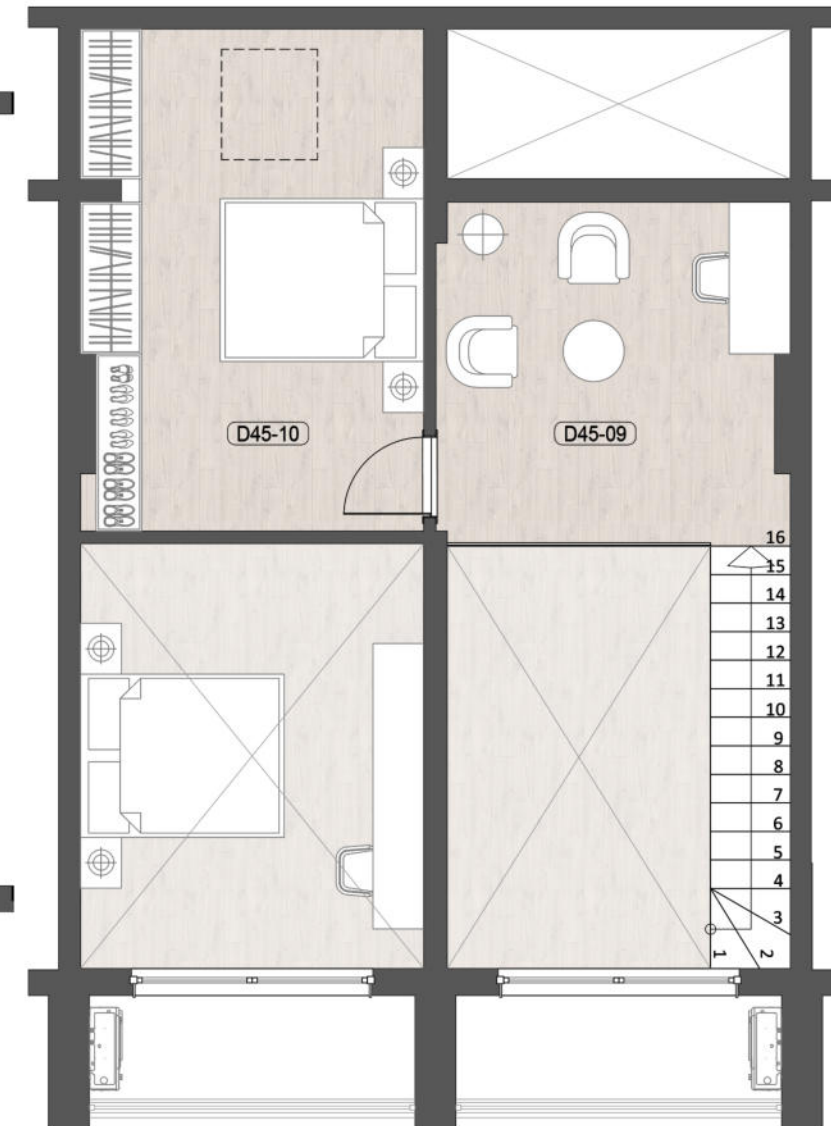
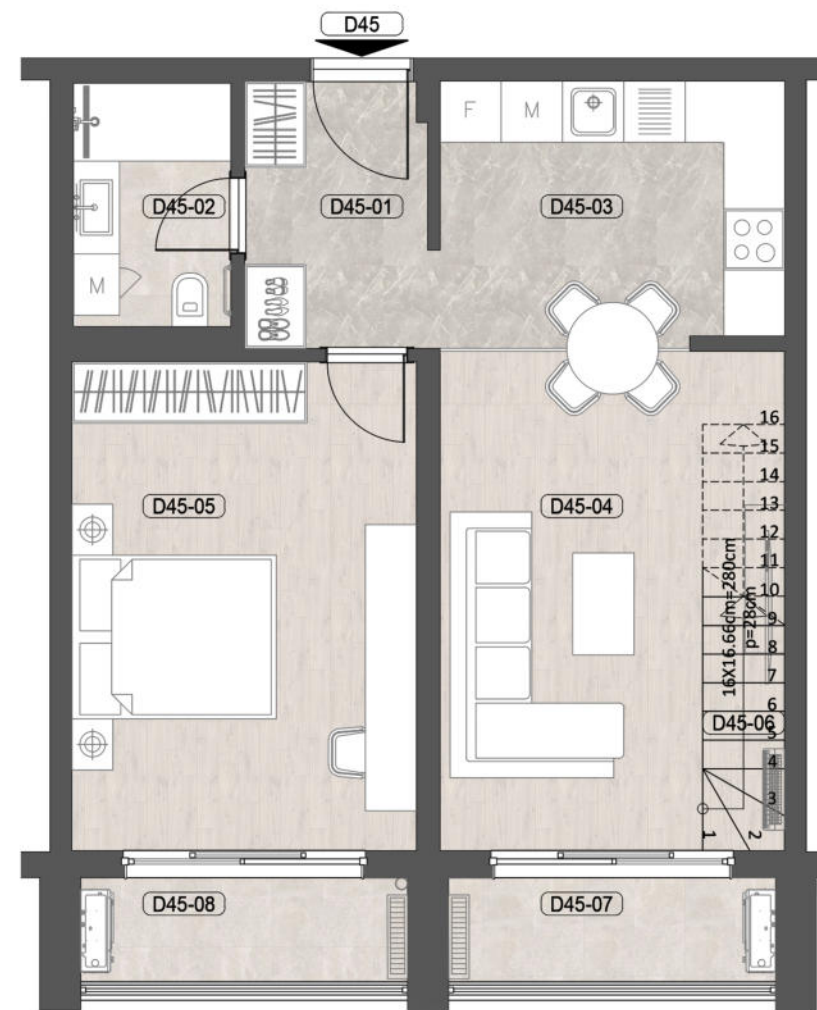
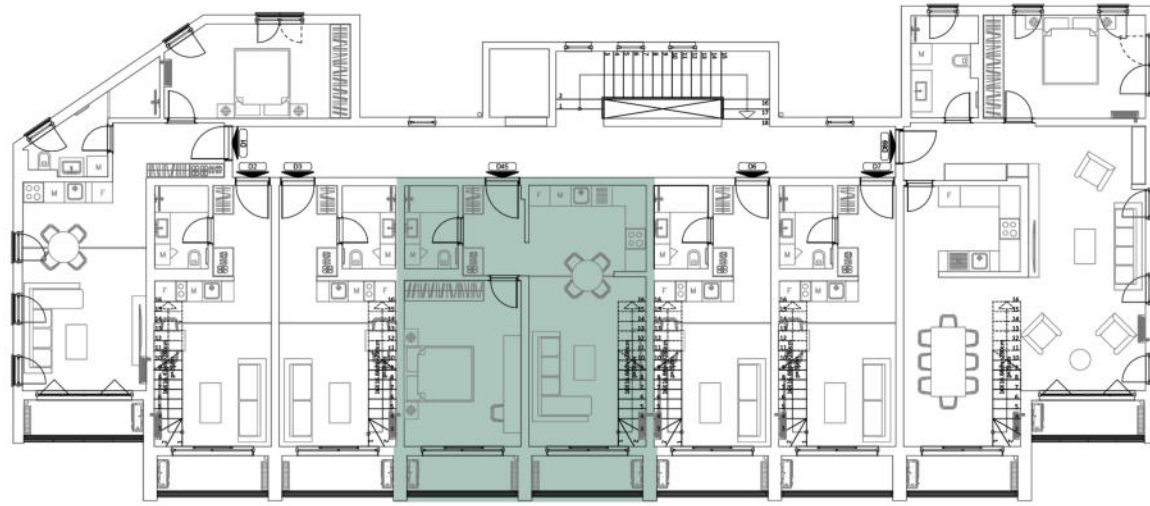
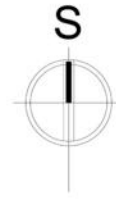
Total NET area of the apartment B89: 82.70 m²



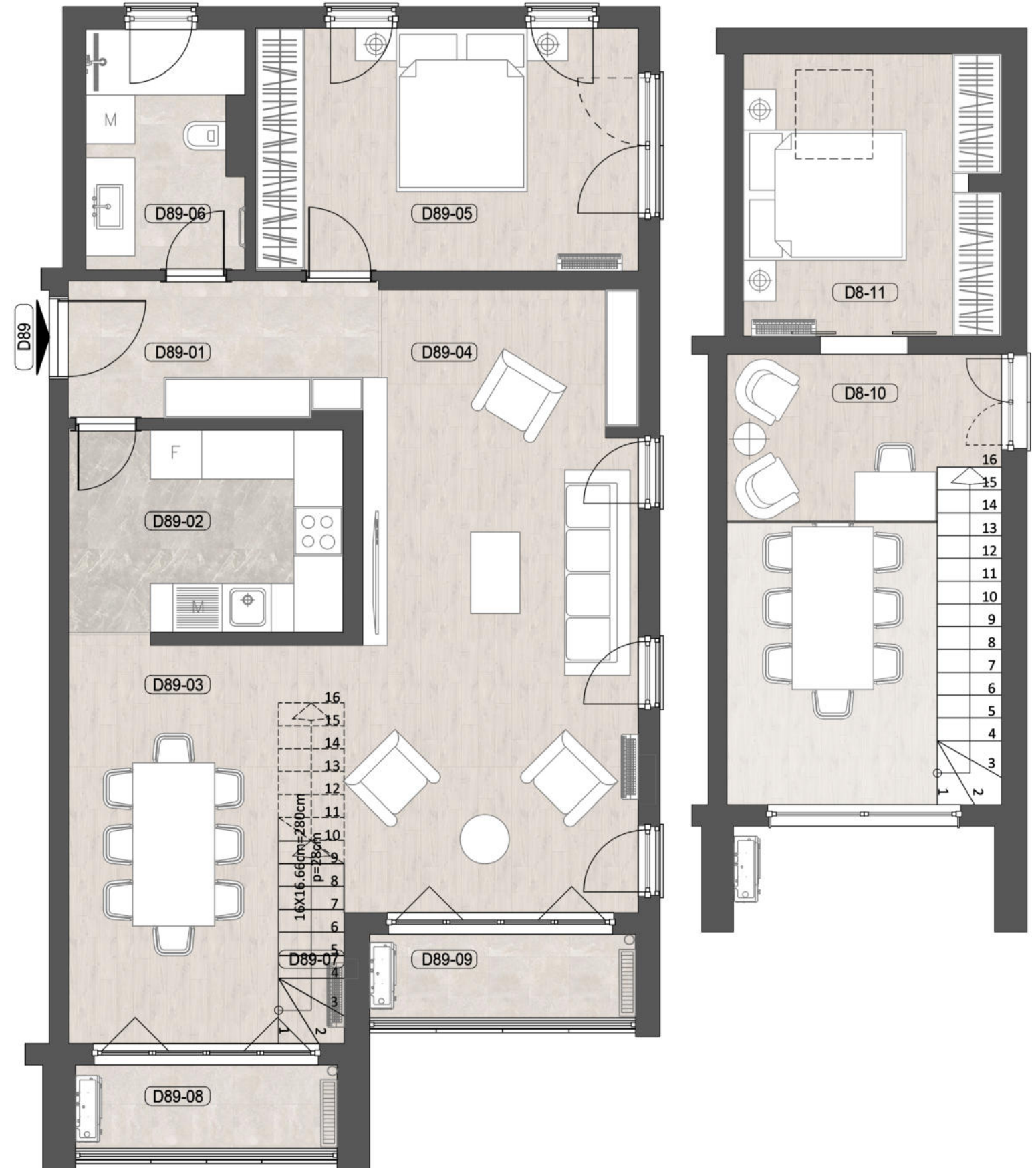
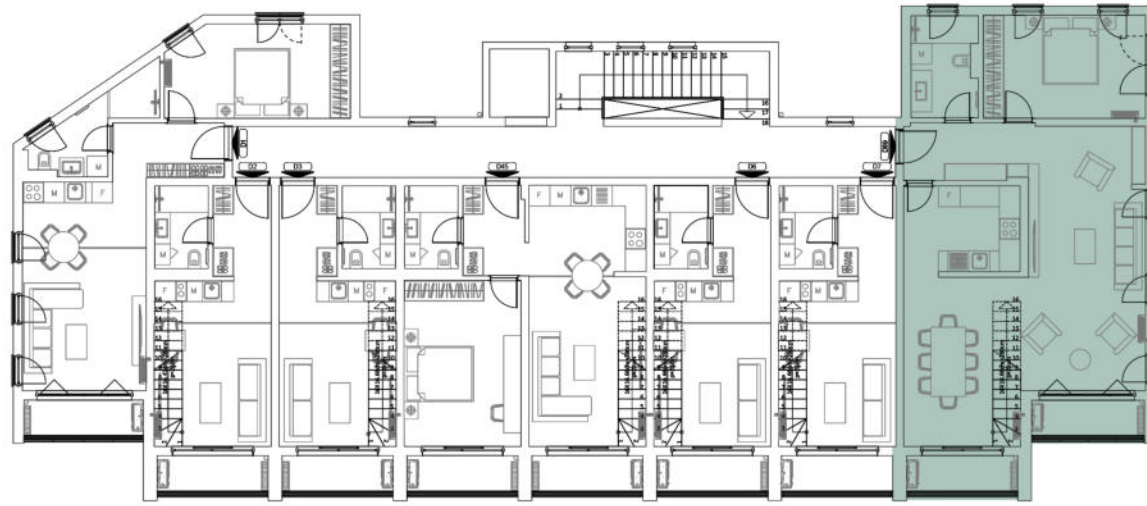
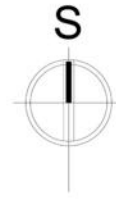
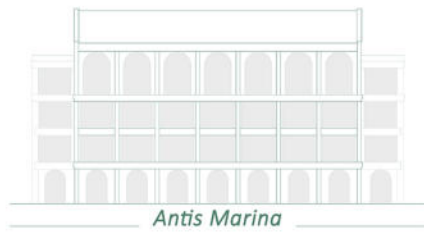
Apartment B123		
No.	Room type	m ²
B123_01	Corridor	12.75
B123_02	Bedroom	14.10
B123_03	Bathroom	6.90
B123_04	Kichen	4.15
B123_05	Living room	13.80
B123_06	Terrace	4.00
B123_07	Corridor	4.60
B123_08	Bathroom	3.65
B123_09	Bedroom	16.15
B123_10	Terrace	3.80
B123_11	Bedroom	26.00
B123_12	Terrace	3.80
Total NET area of the apartment B123:		113.70 m²



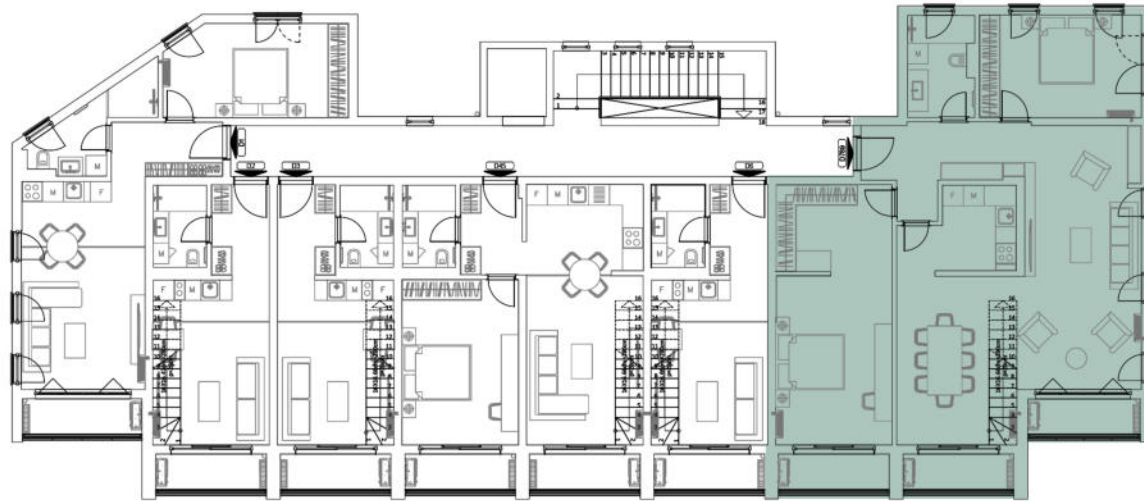
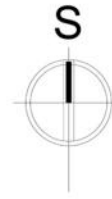
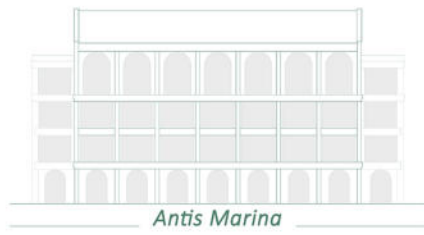
Antis Marina



Apartment D45		
No.	Room type	m ²
D45_01	Corridor	4.75
D45_02	Bathroom	3.65
D45_03	Kitchen	8.70
D45_04	Living room	14.45
D45_05	Bedroom	16.10
D45_06	Stairs	3.30
D45_07	Terrace	3.80
D45_08	Terrace	3.80
D45_09	Gallery	11.50
D45_10	Bedroom	16.35
Total NET area of the apartment D45:		86.40 m²



Apartment D89		
No.	Room type	m ²
D89_01	Corridor	6.00
D89_02	Kitchen	8.30
D89_03	Dining room	14.60
D89_04	Living room	26.45
D89_05	Bedroom	13.90
D89_06	Bathroom	5.50
D89_07	Stairs	3.30
D89_08	Terrace	3.80
D89_09	Terrace	3.90
D89_10	Gallery	6.40
D89_11	Bedroom	10.90
Total NET area of the apartment D89:		103.05 m²



Apartment D789

No.	Room type	m ²
D789_01	Corridor	8.80
D789_02	Bathroom	5.50
D789_03	Bedroom	13.90
D789_04	Living room	26.45
D789_05	Dining room	14.90
D789_06	Kitchen	7.30
D789_07	Bedroom	25.20
D789_08	Stairs	3.35
D789_09	Terrace	3.80
D789_10	Terrace	3.80
D789_11	Terrace	3.90
D789_12	Gallery	13.15
D789_13	Bedroom	12.30
D789_14	Bedroom	10.90

Total NET area of the apartment D789: 153.25 m²

